

# Glass Fittings

from dormakaba







## dormakaba all-glass systems now available from CRL

CRL has expanded its range of door hardware and is the new UK distribution partner for dormakaba.

- Manual sliding door systems
- Manual swing door systems
- Fittings for all-glass systems
- Clamp profiles
- Door rail system
- Floor springs

Visit our website [www.crlaurence.co.uk](http://www.crlaurence.co.uk) or call 00800 0421 6144 to find out more

**CRL**  
A CRH COMPANY





## Studio

With their slim profile and elegant design, STUDIO locks blend into the aesthetics of any room design. With choices of different locking variants and handle positions there is something to fit every requirement.

### Features:

- High level of security and quality due to premium and robust lock technology
- Simple and easy installation
- Quiet door closing due to noise reduction materials
- A variety of colours and locks offer great individuality



#### Finishes



101

AL Silver EVI Anodised



150

AL Silver Anodised



157

AL Niro Anodised



700

Satin Stainless Steel



750

Satin Stainless Steel



## dormakaba Studio Classic lock set, for 8-10 mm glass

- Non-locking, for locks with follower, includes office hinges and sleeves, EN1935:2002
- High level of security and quality due to premium and robust lock technology
- Quiet door closing due to noise reduction materials
- Latch function and bolt tested on 200,000 motion cycles - tested to EN 12209



Product Code	Finish
85174615099	AL silver anodised (150)
85174615799	AL niro anodised (157)



## dormakaba Studio Classic lock set, for 8-10 mm glass

- For profile-cylinder, for locks with follower, includes office hinges and sleeves, EN1935:2002
- High level of security and quality due to premium and robust lock technology
- Quiet door closing due to noise reduction materials
- Latch function and bolt tested on 200,000 motion cycles - tested to EN 12209



Product Code	Finish
85174715099	AL silver anodised (150)
85174715799	AL niro anodised (157)



## dormakaba Studio Classic lock, for 8-10 mm glass

- Non-locking, for locks with follower
- High level of security and quality due to premium and robust lock technology
- Quiet door closing due to noise reduction materials
- Latch function and bolt tested on 200,000 motion cycles - tested to EN 12209



Product Code	Finish
81000215099	AL silver anodised (150)
81000215799	AL niro anodised (157)



## dormakaba Studio Classic lock, for 8-10 mm glass

- For profile-cylinder, for locks with follower
- High level of security and quality due to premium and robust lock technology
- Quiet door closing due to noise reduction materials
- Latch function and bolt tested on 200,000 motion cycles - tested to EN 12209



Product Code	Finish
81000315099	AL silver anodised (150)
81000315799	AL niro anodised (157)

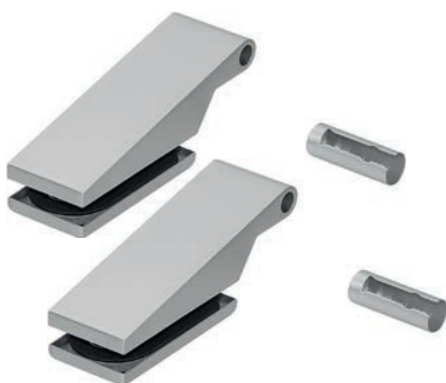


## dormakaba Studio Classic strike-box, for 8-10 mm glass

- High level of security and quality due to premium and robust lock technology
- Quiet door closing due to noise reduction materials



Product Code	Finish
81000515099	AL silver anodised (150)
81000515799	AL niro anodised (157)

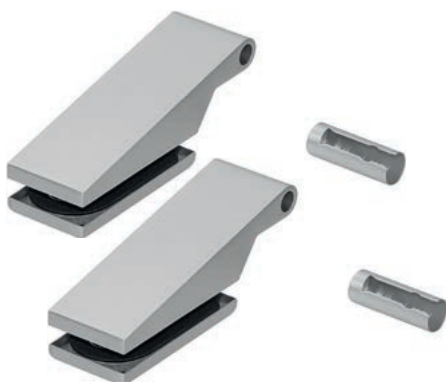


## dormakaba Studio Classic hinge, for 8 mm glass

- Includes sleeves, EN1935:2002/AC:2003
- Safe and easy installation
- High quality
- Sold as a pair
- Maximum weight capacity 60 kgs



Product Code	Finish
81002115099	AL silver anodised (150)
81002115799	AL niro anodised (157)



## dormakaba Studio Classic hinge, for 10 mm glass

- Includes sleeves, EN1935:2002/AC:2003
- Safe and easy installation
- High quality
- Sold as a pair
- Maximum weight capacity 60 kgs



Product Code	Finish
81002015099	AL silver anodised (150)
81002015799	AL niro anodised (157)



## dormakaba Studio Rondo lock set, for 8-10 mm glass

- Non-locking, for locks with follower, includes office hinges and sleeves, EN1935:2002
- High level of security and quality due to premium and robust lock technology
- Quiet door closing due to noise reduction materials
- Latch function and bolt tested on 200,000 motion cycles - tested to EN 12209



Product Code	Finish
85173915099	AL silver anodised (150)
85173915799	AL niro anodised (157)



## dormakaba Studio Rondo lock set, for 8-10 mm glass

- For profile-cylinder, for locks with follower, includes office hinges and sleeves, EN1935:2002
- High level of security and quality due to premium and robust lock technology
- Quiet door closing due to noise reduction materials
- Latch function and bolt tested on 200,000 motion cycles - tested to EN 12209



Product Code	Finish
85174015099	AL silver anodised (150)
85174015799	AL niro anodised (157)



## dormakaba Studio Rondo latch, for 8-10 mm glass

- Non-locking, for locks with follower
- High level of security and quality due to premium and robust lock technology
- Quiet door closing due to noise reduction materials
- Latch function and bolt tested on 200,000 motion cycles - tested to EN 12209



Product Code	Finish
81020115099	AL silver anodised (150)
81020115799	AL niro anodised (157)



## dormakaba Studio Rondo lock, for 8-10 mm glass

- For profile-cylinder, for locks with follower
- High level of security and quality due to premium and robust lock technology
- Quiet door closing due to noise reduction materials
- Latch function and bolt tested on 200,000 motion cycles - tested to EN 12209



Product Code	Finish
81020215099	AL silver anodised (150)
81020215799	AL niro anodised (157)





## dormakaba Studio Rondo hinge, for 8 mm glass

- Includes sleeves, EN1935:2002/AC:2003
- Safe and easy installation
- High quality
- Sold by the pair
- Maximum weight capacity 60 kg



Product Code	Finish
81023015099	AL silver anodised (150)
81023015799	AL niro anodised (157)



## dormakaba Studio Rondo hinge, for 10 mm glass

- Includes sleeves, EN1935:2002/AC:2003
- Safe, easy and flexible to mount
- High quality,
- Sold by the pair
- Maximum weight capacity 60 kg



Product Code	Finish
81023615099	AL silver anodised (150)
81023615799	AL niro anodised (157)



## dormakaba Studio Rondo lock, for 8-10 mm glass

- Non-locking, for locks with follower
- High level of security and quality due to premium and robust lock technology
- Quiet door closing due to noise reduction materials
- Latch function and bolt tested on 200,000 motion cycles - tested to EN 12209



Product Code	Finish
81020015099	AL silver anodised (150)
81020015799	AL niro anodised (157)



## dormakaba Studio Rondo lock, for 8-10 mm glass

- Non-locking latch, for handles with roses
- High level of security and quality due to premium and robust lock technology
- Quiet door closing due to noise reduction materials
- Latch function and bolt tested on 200,000 motion cycles - tested to EN 12209



Product Code	Finish
81021015099	AL silver anodised (150)
81021015799	AL niro anodised (157)



## dormakaba Studio Rondo lock, for 8-10 mm glass

- Non-locking latch, for handles with roses
- High level of security and quality due to premium and robust lock technology
- Quiet door closing due to noise reduction materials
- Latch function and bolt tested on 200,000 motion cycles - tested to EN 12209



Product Code	Finish
81021115099	AL silver anodised (150)
81021115799	AL niro anodised (157)



## dormakaba Studio Rondo lock, for 8-10 mm glass

- For profile-cylinder, latch-only function, for handles with roses
- High level of security and quality due to premium and robust lock technology
- Quiet door closing due to noise reduction materials
- Latch function and bolt tested on 200,000 motion cycles - tested to EN 12209



Product Code	Finish
81021215099	AL silver anodised (150)
81021215799	AL niro anodised (157)



## dormakaba Studio Rondo strike box, for 8-10 mm glass

- High level of security and quality due to premium and robust lock technology
- Quiet door closing due to noise reduction materials



Product Code	Finish
81022015099	AL silver anodised (150)
81022015799	AL niro anodised (157)



## dormakaba Studio Rondo tubular lever handle, for 8-10 mm glass

- 20 mm diameter
- For locks with follower



Product Code	Finish
81030115099	AL silver anodised (150)
81030115799	AL niro anodised (157)



## dormakaba Studio Clarit round door hinge, for 8-10 mm glass

- For frame pivot with non-rebated frames
- Safe and easy installation
- High quality
- Sold as a pair
- Maximum weight capacity 55 kg



Product Code	Finish
81209015099	AL silver anodised (150)
81209015799	AL niro anodised (157)



## dormakaba Studio Clarit square door hinge, for 8-10 mm glass

- For frame pivot with non-rebated frames
- Safe and easy installation
- High quality
- Sold as a pair
- Maximum weight capacity 55 kg



Product Code	Finish
81209115099	AL silver anodised (150)
81209115799	AL niro anodised (157)



### dormakaba Studio screw-on frame pivot

- Safe and easy installation
- High quality

Product Code

81040700099



### dormakaba Studio frame part for steel frames with extended pin

- Safe and easy installation
- High quality

Product Code

81042300099



### dormakaba Studio frame part for wooden frames with extended pin

- Safe and easy installation
- High quality

Product Code

81042400099



### dormakaba Torque wrench

- Calibrated to 12 Nm (can also be adjusted between 3.2 and 16 Nm)

Product Code

80762400099



### dormakaba Automix adapter for LSG (laminated safety glass) special adhesive

Product Code

80762800099



### dormakaba Automix gun for LSG (laminated safety glass) special adhesive

Product Code

80762900099



### dormakaba Special adhesive includes mixing nozzle

Product Code

80763100099



### dormakaba Mixing nozzle

Product Code

80763000099

# Office

The OFFICE locks are a great solution for use on doors with high loads. The solid locks withstand the stress of everyday life.

## Features:

- Reliable under heavy use
- Long service life due to high quality materials
- Quiet door closing due to noise reduction materials
- Adjustable handle position
- Latch function tested on 500,000 motion cycles and bolt tested on 100,000 motion cycles - tested to EN 12209







dormakaba Office Junior round door hinge, for 8-10 mm glass

- Includes sleeves, EN1935:2002/AC:2003
- Safe and easy installation
- High quality
- Sold as a pair
- Maximum weight capacity 80 kg



Product Code	Finish
81123015099	AL silver anodised (150)
81123015799	AL niro anodised (157)
81123070099	Satin stainless steel (700)



dormakaba Office Junior lock, for 8-10 mm glass

- For profile-cylinder, with key override, left hand/right hand
- High level of security and quality due to premium and robust lock technology
- Quiet door closing due to noise reduction materials
- Latch function and bolt tested on 200,000 motion cycles – tested to EN 12209



Product Code	Finish	Handing
81126015099	AL silver anodised (150)	Left
81126015799	AL niro anodised (157)	Left
81126070099	Satin stainless steel (700)	Left
81126115099	AL silver anodised (150)	Right
81126115799	AL niro anodised (157)	Right
81126170099	Satin stainless steel (700)	Right



## dormakaba Office Junior lock, for 8-10 mm glass

- Non-locking latch, for locks with follower, left hand/right hand
- High level of security and quality due to premium and robust lock technology
- Quiet door closing due to noise reduction materials
- Latch function and bolt tested on 200,000 motion cycles – tested to EN 12209



Product Code	Finish	Handing
81126415099	AL silver anodised (150)	Left
81126415799	AL niro anodised (157)	Left
81126470099	Satin stainless steel (700)	Left
81126515099	AL silver anodised (150)	Right
81126515799	AL niro anodised (157)	Right
81126570099	Satin stainless steel (700)	Right



## dormakaba Office Junior strike box, for 8-10 mm glass

- High level of security and quality due to premium and robust lock technology
- Quiet door closing due to noise reduction materials
- Left hand/Right hand



Product Code	Finish	Handing
81120615099	AL silver anodised (150)	Left
81120615799	AL niro anodised (157)	Left
81120670099	Satin stainless steel (700)	Left
81120715099	AL silver anodised (150)	Right
81120715799	AL niro anodised (157)	Right
81120770099	Satin stainless steel (700)	Right



## dormakaba Office Classic square door hinge, for 8-10 mm glass

- Includes sleeves, EN1935:2002/AC:2003
- Safe and easy installation
- High quality
- Sold as a pair
- Maximum weight capacity 80 kg



Product Code	Finish
81128815099	AL silver anodised (150)
81128815799	AL niro anodised (157)



## dormakaba Office Classic lock, for 8-10 mm glass

- For profile-cylinder, with follower, with key override, left hand/right hand
- High level of security and quality due to premium and robust lock technology
- Quiet door closing due to noise reduction materials
- Latch function and bolt tested on 200,000 motion cycles - tested to EN 12209



Product Code	Finish	Handing
81128015099	AL silver anodised (150)	Left
81128015799	AL niro anodised (157)	Left
81128115099	AL silver anodised (150)	Right
81128115799	AL niro anodised (157)	Right



## dormakaba Office Classic lock, for 8-10 mm glass

- Non-locking latch, for locks with follower, left hand/right hand
- High level of security and quality due to premium and robust lock technology
- Quiet door closing due to noise reduction materials
- Latch function and bolt tested on 200,000 motion cycles - tested to EN 12209



Product Code	Finish	Handing
81128415099	AL silver anodised (150)	Left
81128415799	AL niro anodised (157)	Left
81128515099	AL silver anodised (150)	Right
81128515799	AL niro anodised (157)	Right





**dormakaba Office Classic strike box, for 8-10 mm glass**

- High level of security and quality due to premium and robust lock technology
- Safe and easy installation
- Quiet door closing due to noise reduction materials



Product Code	Finish	Handing
81128615099	AL silver anodised (150)	Left
81128615799	AL niro anodised (157)	Left
81128715099	AL silver anodised (150)	Right
81128715799	AL niro anodised (157)	Right





## dormakaba Office Mundus lock, for 8-10 mm glass

- For profile-cylinder, for locks with follower, with key override, left hand/right hand
- High level of security and quality due to premium and robust lock technology
- Quiet door closing due to noise reduction materials
- Latch function tested on 500,000 motion cycles and bolt tested on 100,000 motion cycles - tested to EN 12209



Product Code	Finish	Handing
81183815099	AL silver anodised (150)	Left
81183815799	AL niro anodised (157)	Left
81183875099	Satin stainless steel (750)	Left
81183915099	AL silver anodised (150)	Right
81183915799	AL niro anodised (157)	Right
81183975099	Satin stainless steel (750)	Right



## dormakaba Office Mundus lock, for 8-10 mm glass

- Non-locking latch, for locks with follower, with key override left hand/right hand
- High level of security and quality due to premium and robust lock technology
- Quiet door closing due to noise reduction materials
- Latch function tested on 500,000 motion cycles and bolt tested on 100,000 motion cycles - tested to EN 12209



Product Code	Finish	Handing
81184015099	AL silver anodised (150)	Left
81184015799	AL niro anodised (157)	Left
81184075099	Satin stainless steel (750)	Left
81184115099	AL silver anodised (150)	Right
81184115799	AL niro anodised (157)	Right
81184175099	Satin stainless steel (750)	Right



## dormakaba OFFICE Mundus strike box, for 8-10 mm glass

- Safe and easy installation
- Quiet door closing due to noise reduction materials



Product Code	Finish	Handing
81184815099	AL silver anodised (150)	Left
81184815799	AL niro anodised (157)	Left
81184875099	Satin stainless steel (750)	Left
81184915099	AL silver anodised (150)	Right
81184915799	AL niro anodised (157)	Right
81184975099	Satin stainless steel (750)	Right



### dormakaba Office Junior frame pivot for mounting elements

- Stainless steel
- Safe and easy installation
- High quality

Product Code

81130400099

---



### dormakaba Office Junior frame pivot for steel frames with plastic bushing

- Stainless steel
- Safe and easy installation
- High quality

Product Code

81130700099

---



### dormakaba Office Junior frame pivot for 120 frame pocket

- Stainless steel
- Safe and easy installation
- High quality

Product Code

81130800099

---



### dormakaba Office Junior/Classic frame pivot for steel frames with plastic bushing

- Stainless steel
- Safe and easy installation
- High quality

Product Code

81130900099

---



### dormakaba Office Junior/Classic frame pivot for wooden frames with plastic bushing

- Stainless steel
- Safe and easy installation
- High quality

Product Code

81131000099

---



### dormakaba Office Junior/Classic screw on frame pivot

- Stainless steel
- Safe and easy installation
- High quality

Product Code

81140500099

---



## Muto

Whether used with glass or wood - MUTO creates elegant transitions from one room to another. MUTO's high-quality technology is discreetly hidden in a compact smooth running track. Graduated system sizes and the choice of various functions enable the sliding door to be designed to individual requirements. Should the requirements change, additional functions can be added retrospectively.

### Features:

- For use with glass and wood
- Light and heavy doors (60–150 kg)
- Easy assembly and adjustment due to removable cover profile
- For use with single and double panel doors







dormakaba Muto Comfort M60 set wall installation, for 8-12 mm glass

- For DORMOTION, includes track rail, cover profile and complete accessories
- For 950 and 1200 mm panel width
- For 1900 and 2400 mm profile length
- All settings can be adjusted from the front after installation
- Tested on 50,000 motion cycles to DIN EN 1527
- Certified and secured use of laminated safety glass
- Maximum weight capacity 60 kg



Product Code	Finish	Panel Width	Mounting	Length
83667015099	AL silver anodised (150)	950 mm	Wall	1900 mm
83667015799	AL niro anodised (157)	950 mm	Wall	1900 mm
83667115099	AL silver anodised (150)	1200 mm	Wall	2400 mm
83667115799	AL niro anodised (157)	1200 mm	Wall	2400 mm
83667215099	AL silver anodised (150)	950 mm	Ceiling	1900 mm
83667215799	AL niro anodised (157)	950 mm	Ceiling	1900 mm
83667315099	AL silver anodised (150)	1200 mm	Ceiling	2400 mm
83667315799	AL niro anodised (157)	1200 mm	Ceiling	2400 mm



dormakaba Muto Comfort M60 DORMOTION set

- Includes cushioning unit left/right and starter
- Minimum panel width 660 mm
- All settings can be adjusted from the front after installation
- Tested on 50,000 motion cycles to DIN EN 1527
- Certified and secured use of laminated safety glass
- Maximum weight capacity 60 kg

Product Code  
83669300099



dormakaba Muto Comfort M60 Laminated Safety Glass set

- Accessory set for use with laminated safety glass for a pair of clamp carriers, 2 gaskets and 4 special screws
- Certified and secure use of laminated safety glass
- Maximum weight capacity 60 kg

Product Code  
83693900099



dormakaba Muto Comfort M60 timber adapter set, 1310 mm length

- Safe and easy installation
- Maximum weight capacity 60 kg

Product Code  
83694100099



## dormakaba Muto Comfort L80 set wall installation, for 8-13.52 mm glass

- For DORMOTION, includes track rail, cover profile, brushes and complete accessories
- For 1100 and 1450 mm panel width
- For 2180 and 2880 mm profile length
- All settings can be adjusted from the front after installation
- Tested on 100,000 motion cycles to DIN EN 1527
- Certified and secured use of laminated safety glass
- Maximum weight capacity 80 kg



Product Code	Finish	Panel Width	Mounting	Length
83630015099	AL silver anodised (150)	1100 mm	Wall	2180 mm
83630015799	AL niro anodised (157)	1100 mm	Wall	2180 mm
83630115099	AL silver anodised (150)	1450 mm	Wall	2880 mm
83630115799	AL niro anodised (157)	1450 mm	Wall	2880 mm
83630215099	AL silver anodised (150)	1100 mm	Ceiling	2180 mm
83630215799	AL niro anodised (157)	1100 mm	Ceiling	2180 mm
83630315099	AL silver anodised (150)	1450 mm	Ceiling	2880 mm
83630315799	AL niro anodised (157)	1450 mm	Ceiling	2880 mm



## dormakaba Muto Comfort L80 DORMOTION set

- Includes cushioning unit
- Minimum panel width 660 mm
- All settings can be adjusted from the front after installation
- Tested on 100,000 motion cycles to DIN EN 1527
- Certified and secured use of laminated safety glass
- Maximum weight capacity 80 kg

Product Code

83636100099



## dormakaba Muto Comfort L80 Laminated Safety Glass set

- Accessory set for use with laminated safety glass for a pair of clamp carriers, 2 gaskets and 4 special screws
- Certified and secure use of laminated safety glass
- Maximum weight capacity 80 kg

Product Code

83627000099



## dormakaba Muto Comfort L80 timber adapter set, 2000 mm length

- Safe and easy installation
- Maximum weight capacity 80 kg

Product Code

83626200099



dormakaba Muto Premium XL150 set wall installation, for 8-13.52 mm

- For DORMOTION XL, includes track rail, cover profile, brushes and complete accessories
- For 1250 and 1450 mm panel width
- For 2380 and 2880 mm profile length
- All settings can be adjusted from the front after installation
- Tested on 200,000 motion cycles to DIN EN 1527
- Certified and secured use of laminated safety glass
- Maximum weight capacity 150 kg



Product Code	Finish	Panel Width	Mounting	Length
83650915099	AL silver anodised (150)	1250 mm	Wall	2380 mm
83650915799	AL niro anodised (157)	1250 mm	Wall	2380 mm
83651015099	AL silver anodised (150)	1450 mm	Wall	2880 mm
83651015799	AL niro anodised (157)	1450 mm	Wall	2880 mm
83651115099	AL silver anodised (150)	1250 mm	Ceiling	2380 mm
83651115799	AL niro anodised (157)	1250 mm	Ceiling	2380 mm
83651215099	AL silver anodised (150)	1450 mm	Ceiling	2880 mm
83651215799	AL niro anodised (157)	1450 mm	Ceiling	2880 mm



dormakaba Muto Premium XL150 DORMOTION set

- Includes cushioning unit
- All settings can be adjusted from the front after installation
- Tested on 200,000 motion cycles to DIN EN 1527
- Certified and secured use of laminated safety glass
- Maximum weight capacity 150 kg

Product Code

83657100099





## dormakaba Muto Comfort XL150 Light Laminated Safety Glass set

- Accessory set for use with laminated safety glass for a pair of clamp carriers, 2 gaskets and 4 special screws
- Certified and secure use of laminated safety glass
- Maximum weight capacity 150 kg

Product Code

83646800099



## dormakaba Muto Comfort XL150 Light, Muto Premium XL150 timber adapter set, 2500 mm length

- Wood adapter set, fixed length, profile 12.5 x 36 mm + 12.5 x 4 mm including accessories
- Safe and easy installation
- Maximum weight capacity 80 kg

Product Code

83646400099



A photograph of a modern interior space featuring a glass partition. On the left, a large teal-colored geometric shape overlaps the image. The background shows a dining area with a wooden table, white chairs, a white vase with flowers, and a red lamp. The floor is made of light-colored wood. The glass partition has a vertical metal handle.

## Fittings for all-glass systems

The demand for light-flooded architecture requires elegant, design-oriented solutions made of fittings and glass. CRL offer technically sophisticated and visually attractive all-glass solutions using an extensive range of high-quality glass fittings.







## dormakaba Mundas Comfort PT10 bottom patch with insert, for 8-12 mm glass

- For Dorma floor spring spindle/round pivot
- Clean design, no visible screw connections
- All settings can be adjusted from the front after installation
- Easy to retrofit and integrate into existing systems
- Maximum weight capacity 150 kg



Product Code	Finish
83810015099	AL silver anodised (150)
83810075099	Satin stainless steel (750)



## dormakaba Mundas Comfort PT20 top patch, for 8-12 mm glass

- With plastic socket for pivot (14 mm diameter)
- Clean design, no visible screw connections
- All settings can be adjusted from the front after installation
- Easy to retrofit and integrate into existing systems
- Maximum weight capacity 150 kg



Product Code	Finish
83820015099	AL silver anodised (150)
83820075099	Satin stainless steel (750)



## dormakaba Mundas PT24 fixing plate

- 6 mm fixing plate and pivot (14 mm diameter)
- Clean design, no visible screw connections
- All settings can be adjusted from the front after installation
- Easy to retrofit and integrate into existing systems
- Maximum weight capacity 150 kg

Product Code	Finish	Mounting
83824015099	AL silver anodised (150)	Let into ceiling



## dormakaba Mundas PT24 fixing plate

- 3 mm fixing plate and pivot (14 mm diameter)
- Screw connections
- All settings can be adjusted from the front after installation
- Easy to retrofit and integrate into existing systems
- Maximum weight capacity 150 kg

Product Code	Finish	Mounting
83824115099	AL silver anodised (150)	Screws onto ceiling
83824175099	Satin stainless steel (750)	Screws onto ceiling

# Fittings for All-Glass Systems



## dormakaba Mundus Comfort PT30 patch fitting, for 8-12 mm glass

- Patch fitting for overpanel with pivot (14 mm diameter)
- M8 tapped hole at side, complete
- Clean design, no visible screw connections
- All settings can be adjusted from the front after installation
- Easy to retrofit and integrate into existing systems
- Maximum weight capacity 150 kg



Product Code	Finish
83830015099	AL silver anodised (150)
83830075099	Satin stainless steel (750)



## dormakaba Mundus Comfort PT40 patch fitting, for 8-12 mm glass

- Patch fitting for overpanel and sidelight with pivot (14 mm diameter), complete
- Clean design, no visible screw connections
- All settings can be adjusted from the front after installation
- Easy to retrofit and integrate into existing systems
- Maximum weight capacity 150 kg



Product Code	Finish
83840015099	AL silver anodised (150)
83840075099	Satin stainless steel (750)



## dormakaba Mundus Comfort PT40 patch fitting with stop insert, for 8-15 mm glass

- Patch fitting for overpanel and sidelight, complete
- Clean design, no visible screw connections
- All settings can be adjusted from the front after installation
- Easy to retrofit and integrate into existing systems
- Maximum weight capacity 150 kg



Product Code	Finish
83840315099	AL silver anodised (150)
83840375099	Satin stainless steel (750)



## dormakaba Mundus Comfort PT40 patch fitting with blank insert, for 8-15 mm glass

- Patch fitting for overpanel and sidelight, complete
- Clean design, no visible screw connections
- All settings can be adjusted from the front after installation
- Easy to retrofit and integrate into existing systems
- Maximum weight capacity 150 kg



Product Code	Finish
83840615099	AL silver anodised (150)
83840675099	Satin stainless steel (750)





## dormakaba Mundas Comfort GK30 strike box, for 8-12 mm glass

- Single overpanel strike box with M8 tapped hole at side
- Suitable for corner lock US10, complete
- Clean design, no visible screw connections
- All settings can be adjusted from the front after installation
- Easy to retrofit and integrate into existing systems
- Maximum weight capacity 150 kg



Product Code	Finish
83853015099	AL silver anodised (150)
83853075099	Satin stainless steel (750)



## dormakaba Mudas Comfort GK50 strike box, for 8-19 mm glass

- Suitable for centre lock US20, complete
- Clean design, no visible screw connections
- All settings can be adjusted from the front after installation
- Easy to retrofit and integrate into existing systems
- Maximum weight capacity 150 kg



Product Code	Finish
83855015099	AL silver anodised (150)
83855075099	Satin stainless steel (750)



## dormakaba Mundas Comfort US10 corner lock, for 8-19 mm glass

- Prepared for European profile cylinder (EPC)
- Security rosettes on both sides, complete
- Clean design, no visible screw connections
- All settings can be adjusted from the front after installation
- Easy to retrofit and integrate into existing systems
- Maximum weight capacity 150 kg



Product Code	Finish
83851015099	AL silver anodised (150)
83851075099	Satin stainless steel (750)



## dormakaba Mudas Comfort US20 centre lock, for 8-19 mm glass

- Prepared for European profile cylinder (EPC)
- Security rosettes on both sides, complete
- Clean design, no visible screw connections
- All settings can be adjusted from the front after installation
- Easy to retrofit and integrate into existing systems
- Maximum weight capacity 150 kg



Product Code	Finish
83852015099	AL silver anodised (150)
83852075099	Satin stainless steel (750)

# Fittings for All-Glass Systems



## dormakaba corner hinges for panel, for 8-10 mm glass

- Includes 1 floor pivot, 1 bottom corner hinge (height adjustable), 1 top pivot, 1 top corner hinge
- Maximum weight capacity 80 kg
- Maximum door width 1100mm



Product Code	Finish	Description
81204015799	AL niro anodised (157)	Left
81204115799	AL niro anodised (157)	Right



## dormakaba floor bearing with fixing plate

- Includes cover plate
- Height Adjustable
- Safe and easy installation

Product Code	Finish
80110610199	AL silver EV1 anodised (101)
80110670099	Satin stainless steel (700)



## dormakaba PT24 pivot with fixing plate

- Material thickness 3mm
- Safe and easy installation

Product Code	Finish
80112310199	AL silver EV1 anodised (101)
80112370099	Satin stainless steel (700)



## dormakaba Universal PT20 top patch fitting, for 10-12 mm glass

- For pivot
- Safe and easy installation
- Variable pivot point



Product Code	Finish
80311010199	AL silver EV1 anodised (101)
80311070099	Satin stainless steel (700)



## dormakaba Universal PT30 patch fitting, for 10-12 mm glass

- Patch fitting for overhead panel with pivot 15 mm diameter
- Safe and easy installation
- Variable pivot point



Product Code	Finish
80312010199	AL silver EV1 anodised (101)
80312070099	Satin stainless steel (700)



## dormakaba Universal PT40 patch fitting, for 10-12 mm glass

- Patch fitting for overhead panel and side panel with pivot 15 mm diameter
- Safe and easy installation
- Variable pivot point



Product Code	Finish
80314010199	AL silver EV1 anodised (101)
80314070099	Satin stainless steel (700)



## dormakaba Universal US10 patch lock, for 10-12 mm glass

- Uniform lock program design via fitting variants and strike boxes
- Safe and easy installation



Product Code	Finish
80320610199	AL silver EV1 anodised (101)
80320670099	Satin stainless steel (700)



## dormakaba Universal US20 patch lock, for 10-12 mm glass

- Uniform lock program design via fitting variants and strike boxes
- Safe and easy installation



Product Code	Finish
80321510199	AL silver EV1 anodised (101)
80321570099	Satin stainless steel (700)

## dormakaba Universal GK30 over panel strike box, for 10-12 mm glass

- Uniform lock program design via fitting variants and strike boxes
- Safe and easy installation



Product Code	Finish
80323010199	AL silver EV1 anodised (101)
80323070099	Satin stainless steel (700)

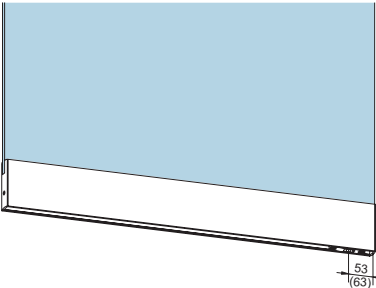
## dormakaba Universal GK50 patch keep, for 10-12 mm glass

- Uniform lock program design via fitting variants and strike boxes
- Safe and easy installation



Product Code	Finish
80322410199	AL silver EV1 anodised (101)
80322470099	Satin stainless steel (700)



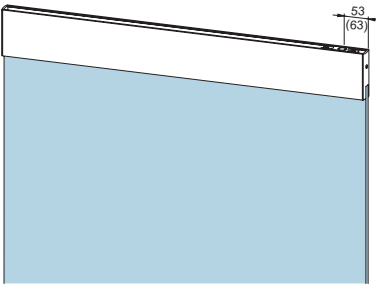


**dormakaba bottom rail, without lock, for 10 or 12 mm glass**

- 100 mm high
- Pivot centre = 55/65 mm
- For up to 1200 mm length
- Stability and glass protection
- Can be combined with universal patch fittings
- Additional safety due to integrated locks
- Maximum weight capacity 150 kg



Product Code	Finish
80410170099	Satin stainless steel

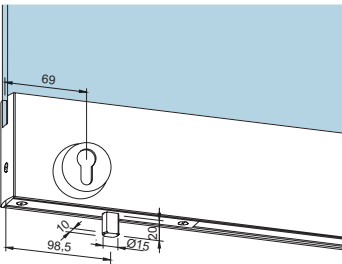


**dormakaba top rail, without lock, for 10 or 12 mm glass**

- 100 mm high
- Pivot centre = 55/65 mm
- For up to 1200 mm length
- Stability and glass protection
- Additional safety due to integrated locks
- Maximum weight capacity 150 kg



Product Code	Finish
80410270099	Satin stainless steel



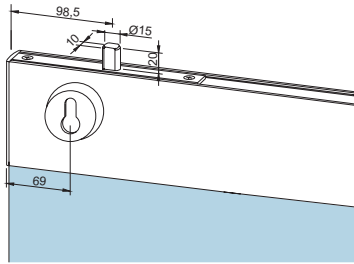
**dormakaba bottom rail, with lock, for 10 or 12 mm glass**

- 100 mm high
- Pivot centre = 55/65 mm
- For up to 1200 mm length
- Stability and glass protection
- Can be combined with universal patch fittings
- Additional safety due to integrated locks
- Maximum weight capacity 150 kg



Product Code	Finish
80411170099	Satin stainless steel



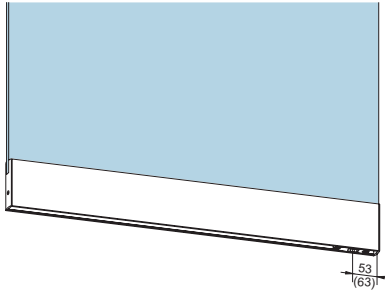


## dormakaba top rail, with lock, for 10 or 12 mm glass

- 100 mm high
- Pivot centre = 55/65 mm
- For up to 1200 mm length
- Stability and glass protection
- Additional safety due to integrated locks
- Maximum weight capacity 150 kg



Product Code	Finish
80411270099	Satin stainless steel

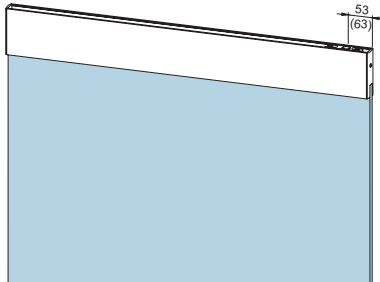


## dormakaba bottom rail, without lock, for 10 or 12 mm glass

- 76.5 mm high
- Pivot centre = 55/65 mm
- For up to 1200 mm length
- Stability and glass protection
- Can be combined with universal patch fittings
- Additional safety due to integrated locks
- Maximum weight capacity 150 kg



Product Code	Finish
80400170099	Satin stainless steel

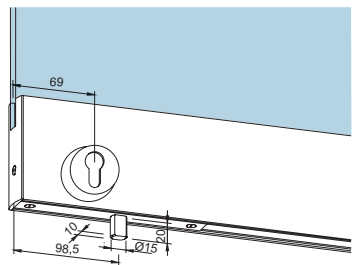


## dormakaba top rail, without locks, for 10 or 12 mm glass

- 76.5 mm high
- Pivot centre = 55/65 mm
- For up to 1200 mm length
- Stability and glass protection
- Additional safety due to integrated locks
- Maximum weight capacity 150 kg



Product Code	Finish
80400270099	Satin stainless steel

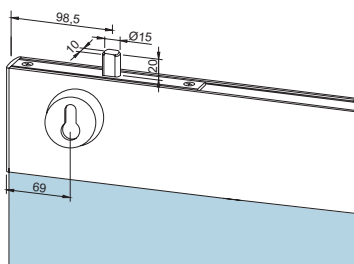


## dormakaba bottom rail, with lock, for 10 or 12 mm glass

- 76.5 mm high
- Pivot centre = 55/65 mm
- For up to 1200 mm length
- Stability and glass protection
- Can be combined with universal patch fittings
- Additional safety due to integrated locks
- Maximum weight capacity 150 kg



Product Code	Finish
80401170099	Satin stainless steel



## dormakaba top rail, with lock, for 10 or 12 mm glass

- 76.5 mm high
- Pivot centre = 55/65 mm
- For up to 1200 mm length
- Stability and glass protection
- Additional safety due to integrated locks
- Maximum weight capacity 150 kg



Product Code	Finish
80401270099	Satin stainless steel



## dormakaba floor bushing

- With spring and plastic buffer
- Includes dirt protection

Product Code
80519300099



dormakaba wall connection profile, for 8-12 mm glass

- 6 m length
- Includes 20 clamps
- Can be cut on request (additional charge)



Product Code	Description	Glass Thickness
80704200099	Wall Connection Profile	8 mm
80700100099	Wall Connection Profile	10 mm
80700200099	Wall Connection Profile	12 mm



dormakaba clip profile for wall connection profile

- 6 m length
- Can be cut on request (additional charge)

Product Code	Finish
80700315799	AL silver anodised (150)
80700315799	AL niro anodised (157)
80700370099	Satin stainless steel (700)





# Floor Springs



## dormakaba floor spring BTS 75V

- dormakaba BTS75v EN1-4 floor spring c/w standard spindle and cement box
- Maximum door weight 120 kg
- Fixed Backcheck - Closing speeds from 175 to 15 degrees & 15 to 0 degrees

Product Code	Description
61701200	90° Hold Open
61701000	No Hold Open



## dormakaba cover plate for BTS 75V

- Stainless steel

### Product Code

46700059



## dormakaba floor spring for BTS 80

- dormakaba BTS80 fixed power floor spring c/w standard spindle and cement box
- Adjustable hold open function (can be turned off)
- Maximum door weight 300 kg
- Fixed Backcheck - Closing speeds from 175 to 15 degrees & 15 to 0 degrees

Product Code	Description
80120000	EN 3
80110000	EN 4



## dormakaba Universal cover plate for BTS 80

- Stainless steel

### Product Code

46700000



## dormakaba floor spring with plug-in axle for BTS 84

- dormakaba BTS84 fixed power floor spring c/w standard spindle and cement box
- Hold open available on specification
- Maximum door weight 100 kg
- Fixed Backcheck - Closing speeds from 175 to 15 degrees & 15 to 0 degrees

Product Code	Description
81110002	EN 3 No Hold Open
81100002	EN 4 No Hold Open
81210002	EN 3 90° Hold Open
81200002	EN 4 90° Hold Open



## dormakaba cover plate for BTS 84

- Stainless steel

### Product Code

46700022







## **C. R. Laurence of Europe**

Call FREE on 00 800 0421 6144

### **Manchester**

Charles Babbage Avenue  
Kingsway Business Park,  
Rochdale, OL16 4NW, England  
Tel: +44 (0) 1706 863 600  
Fax: +44 (0) 1706 869 860  
[crlaurence.co.uk](http://crlaurence.co.uk)

### **Stuttgart**

Boschstrasse 7  
D-74360 Ilsfeld  
Germany  
Tel: +49 (0) 7062 915 93 15  
Fax: +49 (0) 7062 915 93 16  
[crl.eu](http://crl.eu)