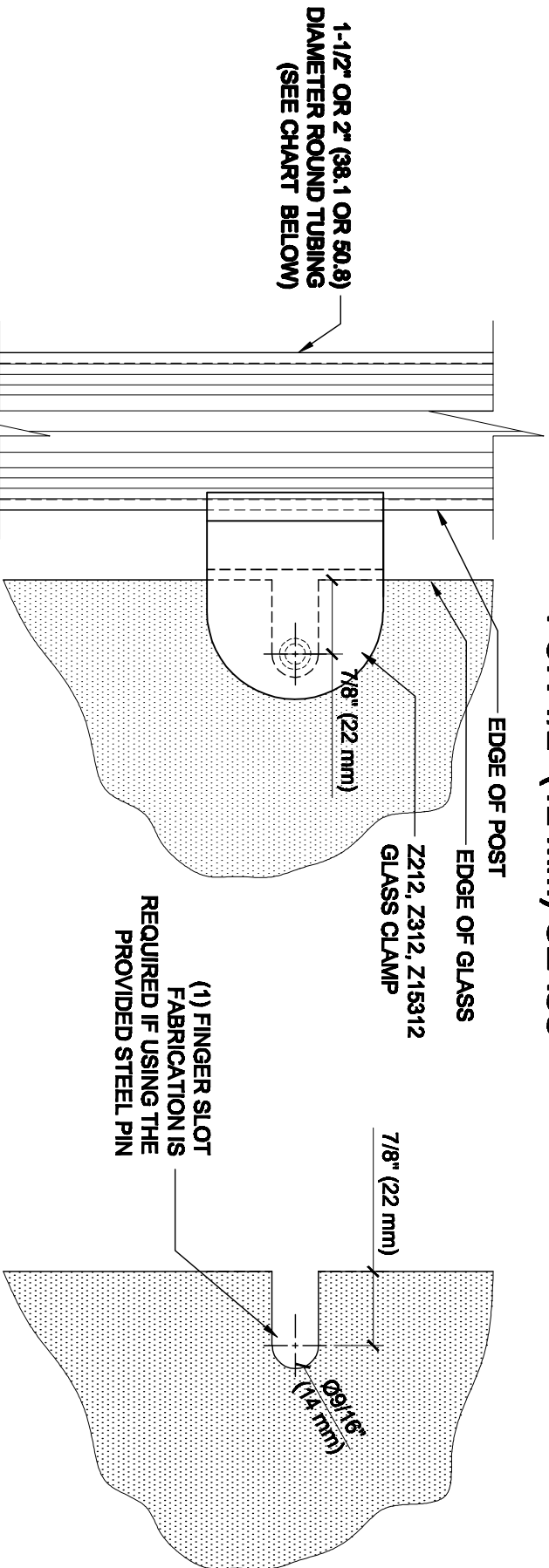


# GLASS FABRICATION TEMPLATE FOR THE Z-SERIES ROUND TYPE RADIUS BASE CLAMPS FOR 1/2" (12 mm) GLASS



1-1/2" OR 2" (38.1 OR 50.8)  
DIAMETER ROUND TUBING  
(SEE CHART BELOW)

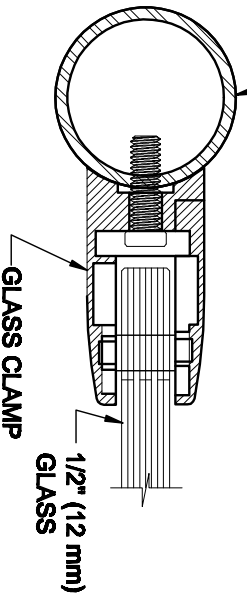
7/8" (22 mm)  
CRL'S STANDARD RECOMMENDED  
(GLASS GAP) BETWEEN POST AND  
EDGE OF GLASS

(1) FINGER SLOT  
FABRICATION IS  
REQUIRED IF USING THE  
PROVIDED STEEL PIN

ALWAYS USE DIMENSIONS SHOWN ON THE PLAN.  
DO NOT SCALE OR DIMENSION ACTUAL DRAWING  
TO ENSURE ACCURACY

**GLASS FABRICATION  
TEMPLATE USED FOR:**

CATALOG NUMBER	TUBE DIA
Z212BR	2" (50.8mm)
Z212CH	2" (50.8mm)
Z212SC	2" (50.8mm)
Z212BN	2" (50.8mm)
Z212GP	2" (50.8mm)
Z212W	2" (50.8mm)
Z312BS	2" (50.8mm)
Z15312BS	1-1/2" (38.1mm)
Z15312PS	1-1/2" (38.1mm)



**SPECIFICATIONS:**

- GLASS THICKNESS: MODELS FOR 1/2" (12 mm) GLASS.
- BASE DESIGN: RADIUS BACK
- FOR USE WITH: 1-1/2" OR 2" (38.1 OR 50.8 mm) DIAMETER ROUND TUBING (SEE CHART)
- MATERIAL: CHOICE OF ZINC CONSTRUCTED OR STAINLESS STEEL, STAINLESS STEEL, OR POWDER PAINTED ZINC CLAMPS ARE RECOMMENDED FOR MORE DURABILITY IN EXTERIOR APPLICATIONS.
- GLASS FABRICATION: FOR 1/2" (12mm) THICK GLASS : 9/16" (14mm) FINGER SLOT REQUIRED IF USING PROVIDED STEEL PIN FOR GLASS SUPPORT.
- INCLUDES: RUBBER GASKETS AND STEEL PIN (FOR OPTIONAL USE) WITH GROMMET.

<b>DESCRIPTION:</b>		<b>CAT. NO. (SEE CHART)</b>	<b>DATE:</b>
Z-SERIES ROUND TYPE RADIUS BASE GLASS CLAMP			10/21/09
FOR 1/2" (12mm) THICK GLASS		<b>FILE NAME: Z212-Gls F&amp;B REV</b>	<b>SCALE: N.T.S</b>
<b>DRAWN BY:</b> R.A.	<b>CHECKED BY:</b> C.H.	<b>SHT 1</b>	<b>OF 1</b>