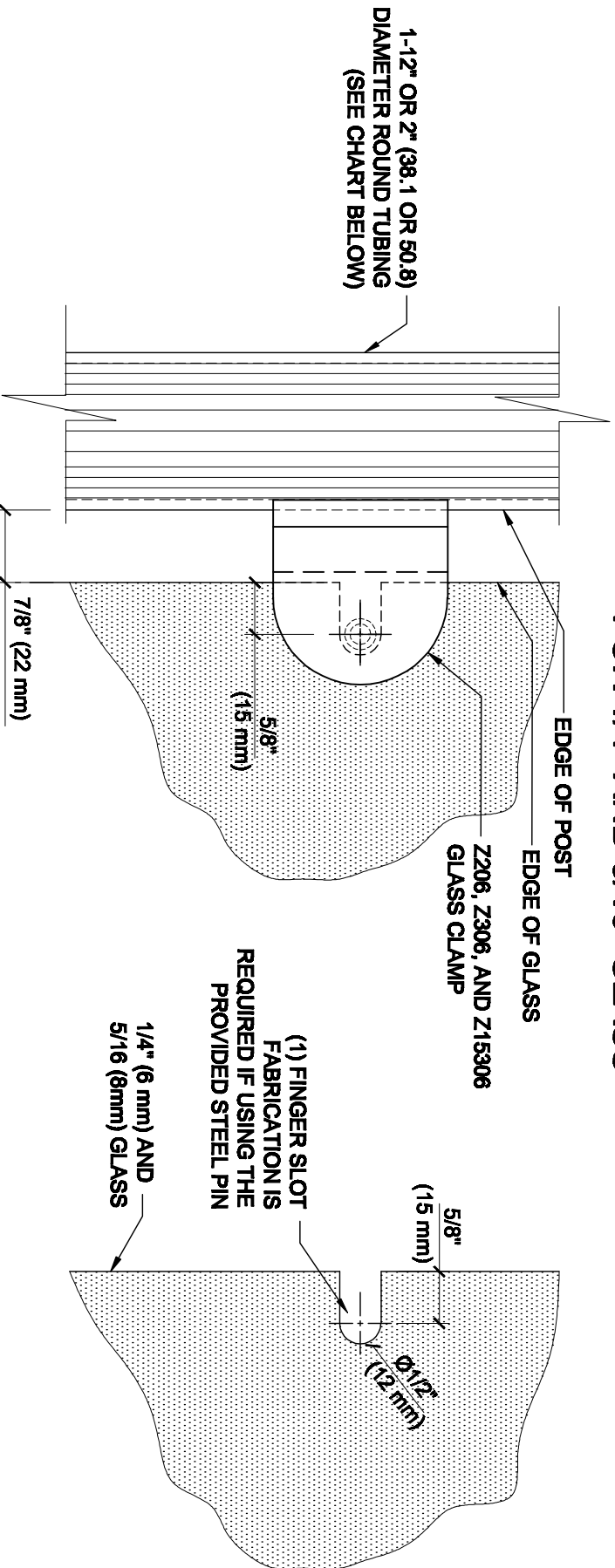


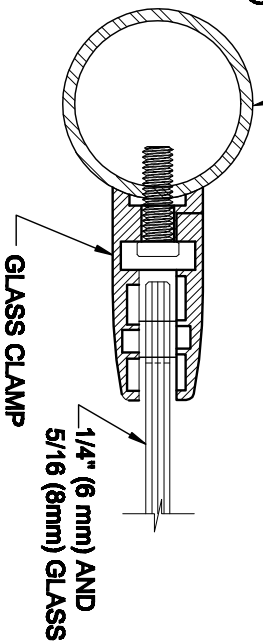
GLASS FABRICATION TEMPLATE FOR THE Z-SERIES ROUND TYPE RADIUS BASE CLAMPS FOR 1/4" AND 5/16" GLASS



1-1/2" OR 2" (38.1 OR 50.8)
DIAMETER ROUND TUBING
(SEE CHART BELOW)

**GLASS FABRICATION
TEMPLATE USED FOR:**

CATALOG NUMBER	TUBE DIA
Z206BR	2" (50.8 mm)
Z206CH	2" (50.8 mm)
Z206SC	2" (50.8 mm)
Z206BN	2" (50.8 mm)
Z206GP	2" (50.8 mm)
Z206W	2" (50.8 mm)
Z306BS	2" (50.8 mm)
Z306PS	2" (50.8 mm)
Z15306BS	1-1/2" (38.1 mm)
Z15306PS	1-1/2" (38.1 mm)



CRL'S STANDARD RECOMMENDED
(GLASS GAP) BETWEEN POST AND
EDGE OF GLASS

(1) FINGER SLOT
FABRICATION IS
REQUIRED IF USING THE
PROVIDED STEEL PIN

ALWAYS USE DIMENSIONS SHOWN ON THE PLAN.
DO NOT SCALE OR DIMENSION ACTUAL DRAWING
TO ENSURE ACCURACY

SPECIFICATIONS:

GLASS THICKNESS: MODELS FOR 1/4" AND 5/16" (6 TO 8 mm) GLASS.
BASE DESIGN: RADIUS BACK
FOR USE WITH: 1-1/2" OR 2" (38.1 OR 50.8 mm) DIAMETER ROUND TUBING (SEE CHART).
MATERIAL: CHOICE OF ZINC CONSTRUCTED OR STAINLESS STEEL, STAINLESS STEEL, OR POWDER PAINTED ZINC CLAMPS ARE RECOMMENDED FOR MORE DURABILITY IN EXTERIOR APPLICATIONS.
GLASS FABRICATION: FOR 1/4" (6 mm), 5/16" (8mm), THICK GLASS, 1/2" (12mm) FINGER SLOT REQUIRED IF USING PROVIDED STEEL PIN FOR GLASS SUPPORT.
INCLUDES: RUBBER GASKETS AND STEEL PIN (FOR OPTIONAL USE) WITH GROMMET.

DESCRIPTION:		CAT. NO. (SEE CHART)		DATE:	
Z-SERIES ROUND TYPE RADIUS BASE GLASS CLAMP		(SEE CHART)		10/21/09	
FOR 1/4" (6mm) & 5/16" (8mm) THICK GLASS		FILE NAME: Z206-Gls Fab Rev	SCALE: N.T.S.	DRAWN BY: R.A.	CHECKED BY: C.H.
				SHT 1	OF 1