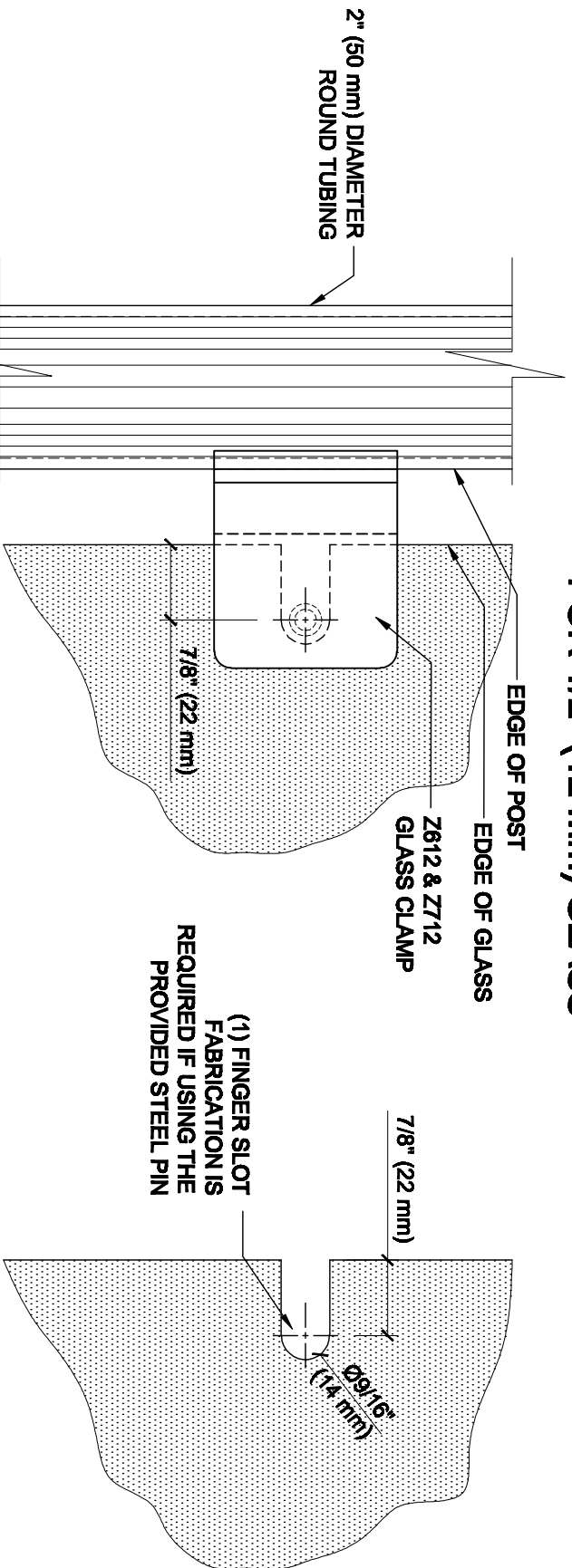


GLASS FABRICATION TEMPLATE FOR THE Z-SERIES SQUARE TYPE RADIUS BASE CLAMPS FOR 1/2" (12 mm) GLASS



2" (50 mm) DIAMETER
ROUND TUBING

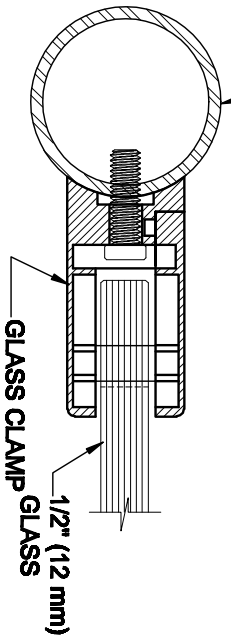
CRL'S STANDARD RECOMMENDED
(GLASS GAP) BETWEEN POST AND
EDGE OF GLASS

(1) FINGER SLOT
FABRICATION IS
REQUIRED IF USING THE
PROVIDED STEEL PIN

ALWAYS USE DIMENSIONS SHOWN ON THE PLAN.
DO NOT SCALE OR DIMENSION ACTUAL DRAWING
TO ENSURE ACCURACY

GLASS FABRICATION TEMPLATE USED FOR:

CATALOG NUMBER	TUBE DIA
Z612BR	2" (50.8 mm) ONLY
Z612CH	2" (50.8 mm) ONLY
Z612SC	2" (50.8 mm) ONLY
Z612BN	2" (50.8 mm) ONLY
Z612GP	2" (50.8 mm) ONLY
Z612W	2" (50.8 mm) ONLY
Z712BS	2" (50.8 mm) ONLY
Z712PS	2" (50.8 mm) ONLY



SPECIFICATIONS:

- GLASS THICKNESS: MODELS FOR 1/2" (12 mm) GLASS.
- BASE DESIGN: RADIUS BACK
- FOR USE WITH: 2" (50.8 mm) DIAMETER ROUND TUBING ONLY.
- MATERIAL: CHOICE OF ZINC CONSTRUCTED OR STAINLESS STEEL, STAINLESS STEEL, OR POWDER PAINTED ZINC CLAMPS ARE RECOMMENDED FOR MORE DURABILITY IN EXTERIOR APPLICATIONS.
- GLASS FABRICATION: FOR 1/2" (12 mm) THICK GLASS, 9/16" (14mm) FINGER SLOT REQUIRED IF USING PROVIDED STEEL PIN FOR GLASS SUPPORT
- INCLUDES: RUBBER GASKETS AND STEEL PIN (FOR OPTIONAL USE) WITH GROMMET.



CRL ARCHITECTURAL PRODUCTS
PH: 800-421-6144 FX: 800-282-3289
WWW.CRLARCHITECTURE.COM

DESCRIPTION:
Z-SERIES SQUARE TYPE RADIUS BASE GLASS CLAMP
FOR 1/2" (12 mm) THICK GLASS

CAT. NO. (SEE CHART)	DATE: 10/23/09
FILE NAME: Z612-G18 F&B REV	SCALE: 1/2"=1'-0"
DRAWN BY: R.A.	CHECKED BY: C.H.
SHT 1	OF 1