


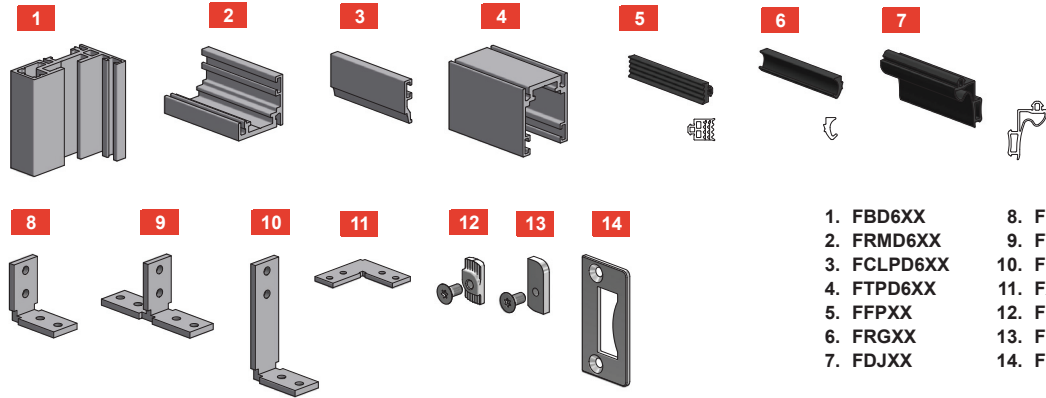
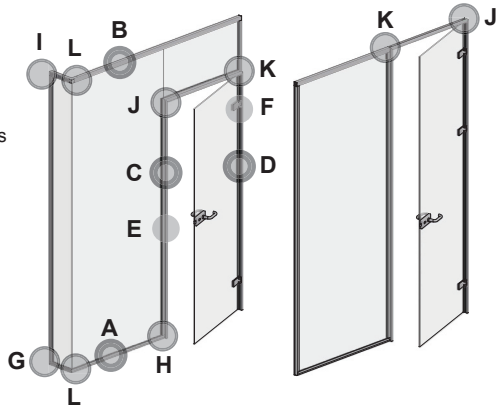
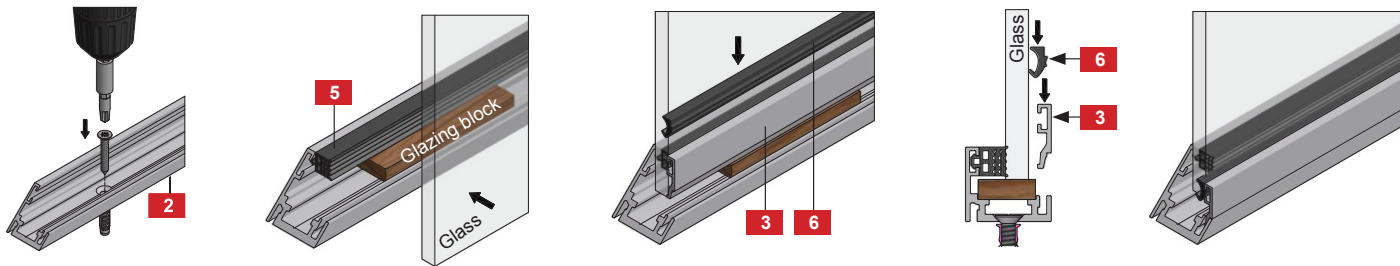


-  A-D Profiles
-  G-K Profile connections
-  E-F Fastening
Strike plate/Door hinge



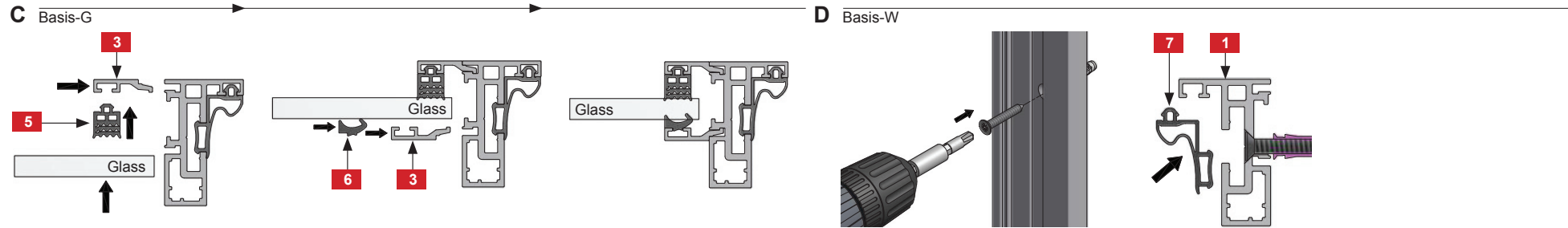
A Frame



B Top-Frame



For powder coated surfaces it is recommended to use soapy water for inserting the fixation rubber.



E

Installation position of hammerhead nut (12/13) according to table A

Detail milling refer to page 3

Cut FDJXX Gasket at Strike Location

65

19,5 8mm
17,5 10mm
15,5 12mm

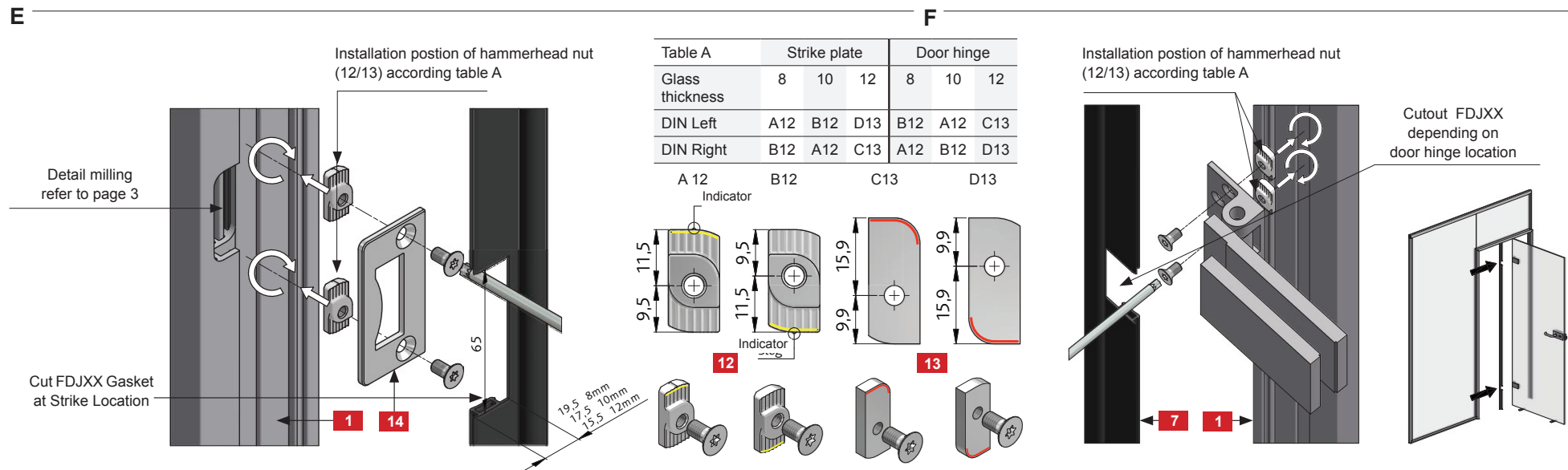
F

Installation position of hammerhead nut (12/13) according to table A

Cutout FDJXX depending on door hinge location

| Table A | Strike plate | | | Door hinge | | |
|-----------------|--------------|-----|-----|------------|-----|-----|
| Glass thickness | 8 | 10 | 12 | 8 | 10 | 12 |
| DIN Left | A12 | B12 | D13 | B12 | A12 | C13 |
| DIN Right | B12 | A12 | C13 | A12 | B12 | D13 |

A 12 B12 C13 D13



Indicator

9,5 11,5 9,5 11,5 9,9 15,9 9,9 15,9

Indicator

12 13

