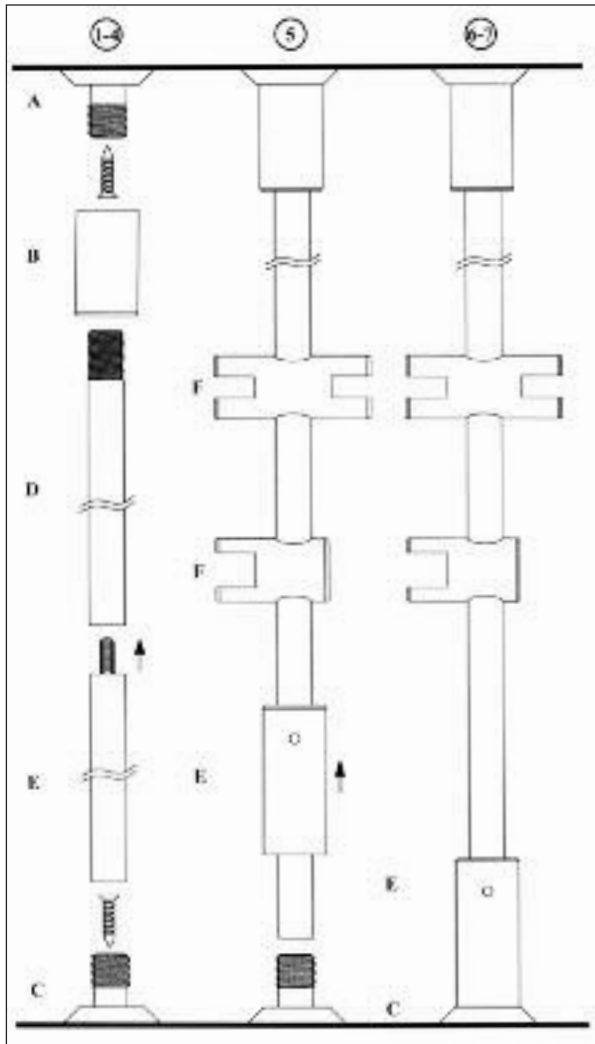


Rod Display System

Installation Guidelines



CEILING TO FLOOR INSTALLATION

Important: It is important to check the substrate to ensure the mounting surface is strong enough to hold the weight of the system and the display. Installation should only be done with proper mounting hardware.

1. Mark your installation points for Parts A and C prior to any installation/assembly to ensure that the configuration is plumb.
2. Install Part A into the ceiling using the appropriate mounting hardware.
-Wood screw when going into wood.
-Toggle bolt when going through plaster/cement board.
-Twist-on clip for Z-bar.
3. Thread Part B onto Part A.
4. Install Part C only after ensuring Parts C and A are plumb with one another. Proceed with installation.
5. Thread Part D into Part B. At this point additional Rods may be stacked or attached into Part D to achieve your required opening height using components ARM621 or ARM1059 (21" or 59" long rods).

Cut Rod to size. Cut **ONLY** off the end with the round tip or internal thread. Leave approximately 1/4" (6 mm) gap between the end of the Rod and Part C.

6. At this point, any Panel Connectors may be placed onto the Rod via the bottom. After all additional Connectors are installed Part E is then installed from the bottom.
(For easier installation, unscrew the rod first)
7. Thread Part E onto Part C and tighten the M4 Screw onto Part E securely onto the Rod.
8. Slide any Panel Connectors to your desired heights and tighten with an M4 Allen Wrench.

It is important to check that parts are properly tightened and stable prior to usage.



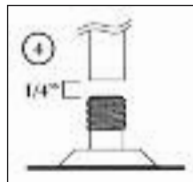
(A) ACA22124 **(B)** ARBAM10 **(C)** ACA22124

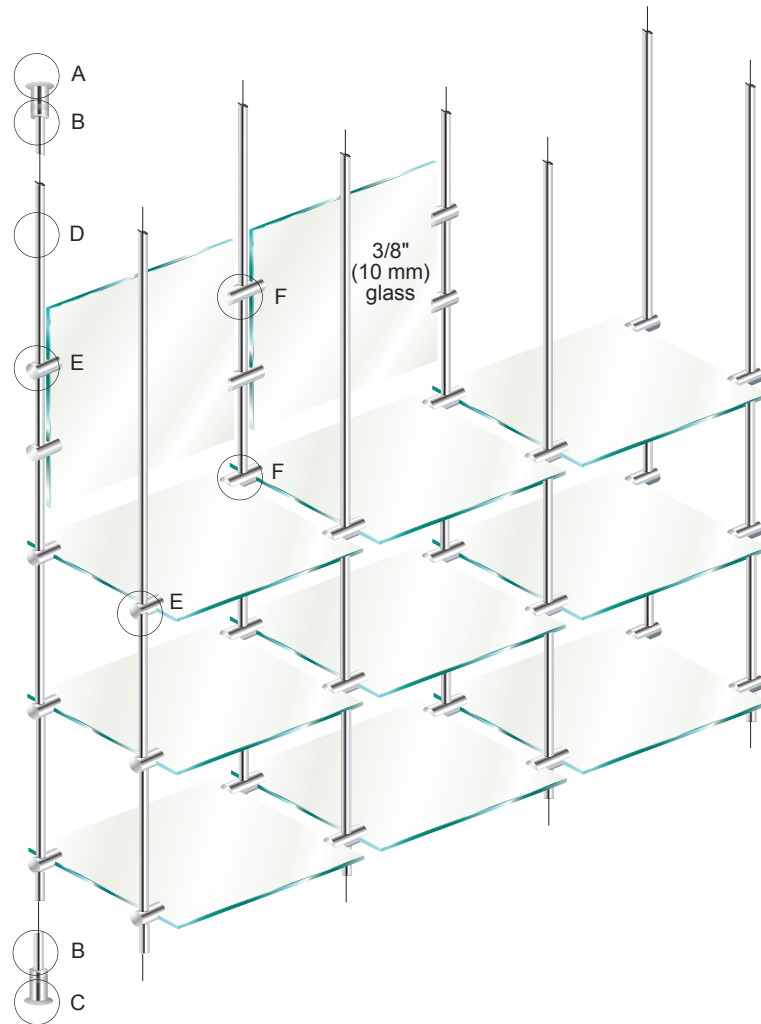


(D) ARM1041 ARM621 ARM1059



(E) ARBAH10





E One-Way Connectors



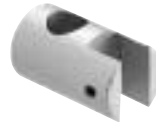
ARHSC6 - 1/4" Connector



ARVPC6 - 1/4" Connector

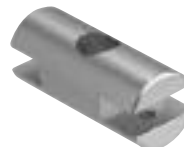


ARHSC10 - 3/8" Connector



ARVPC10 - 3/8" Connector

F Two-Way Connectors



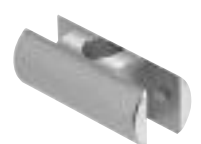
ARDHSC6 - 1/4" Connector



ARDVPC6 - 1/4" Connector



ARDHSC10 - 3/8" Connector



ARDVPC10 - 3/8" Connector