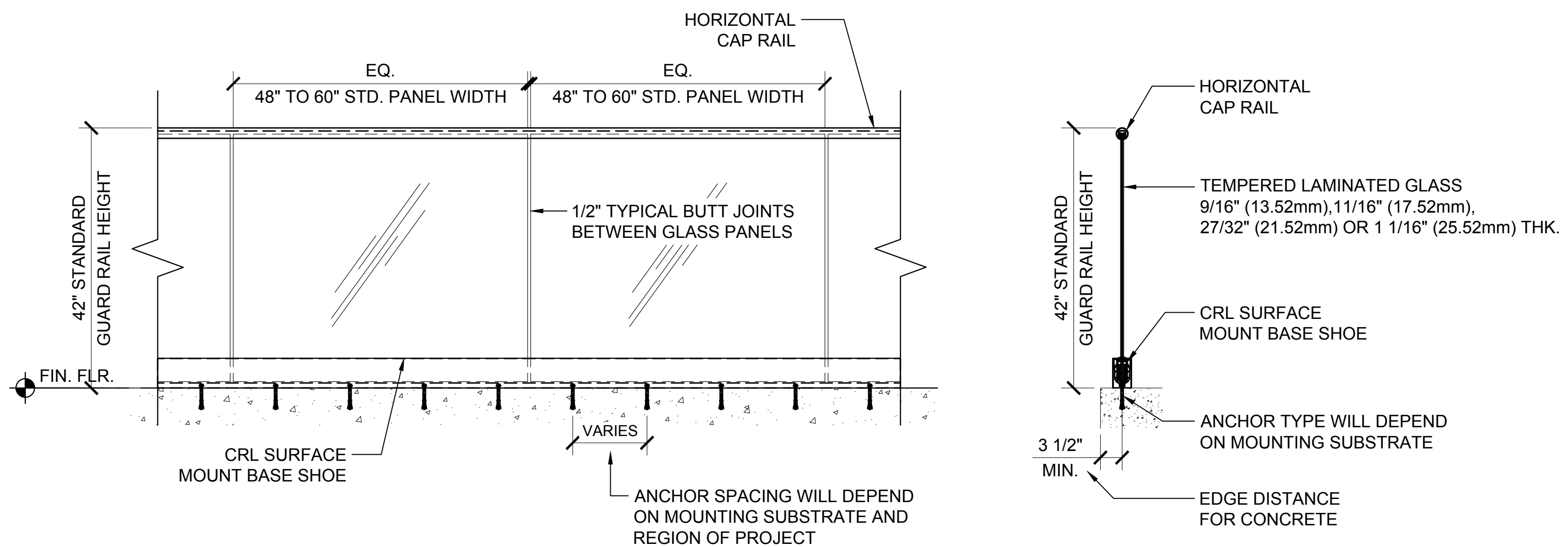


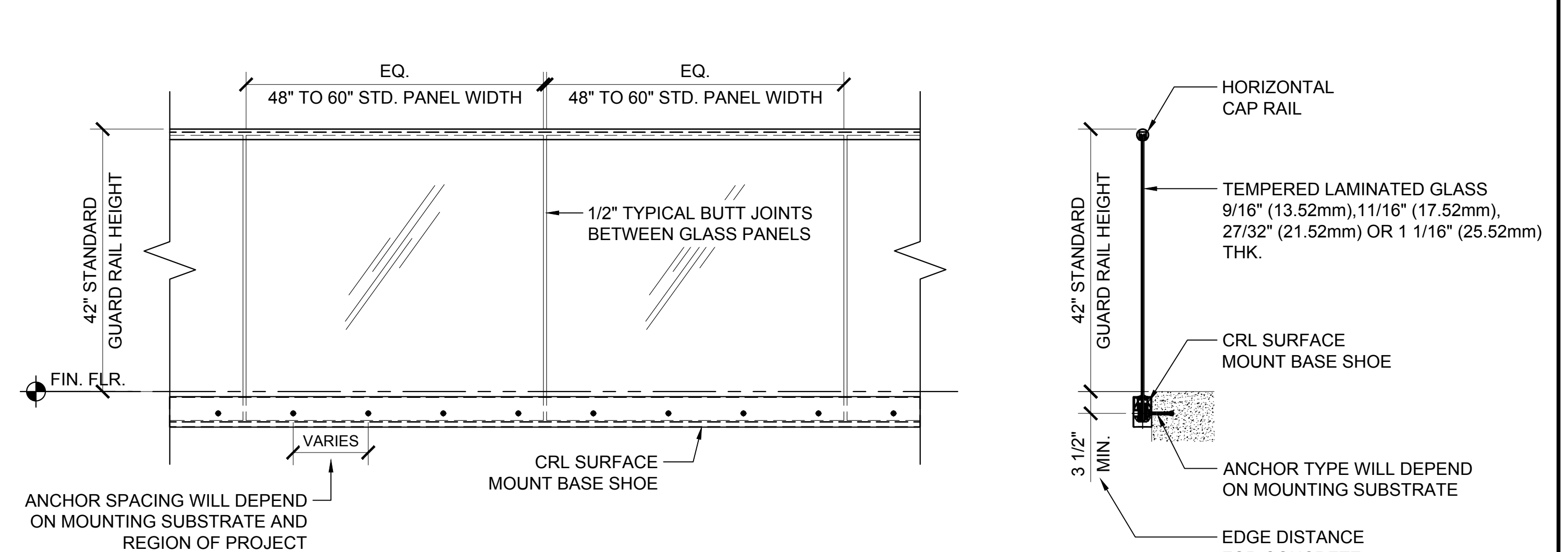
Revisions By:

5	-	-
4	-	-
3	-	-
2	-	-
1	-	-

C.R. LAURENCE CO. ARCHITECTURAL PRODUCTS
2503 E. Vernon Avenue, Los Angeles, CA 90058-1897
PH (800)-421-6144 FX (800)-587-7301 www.crlaurence.com

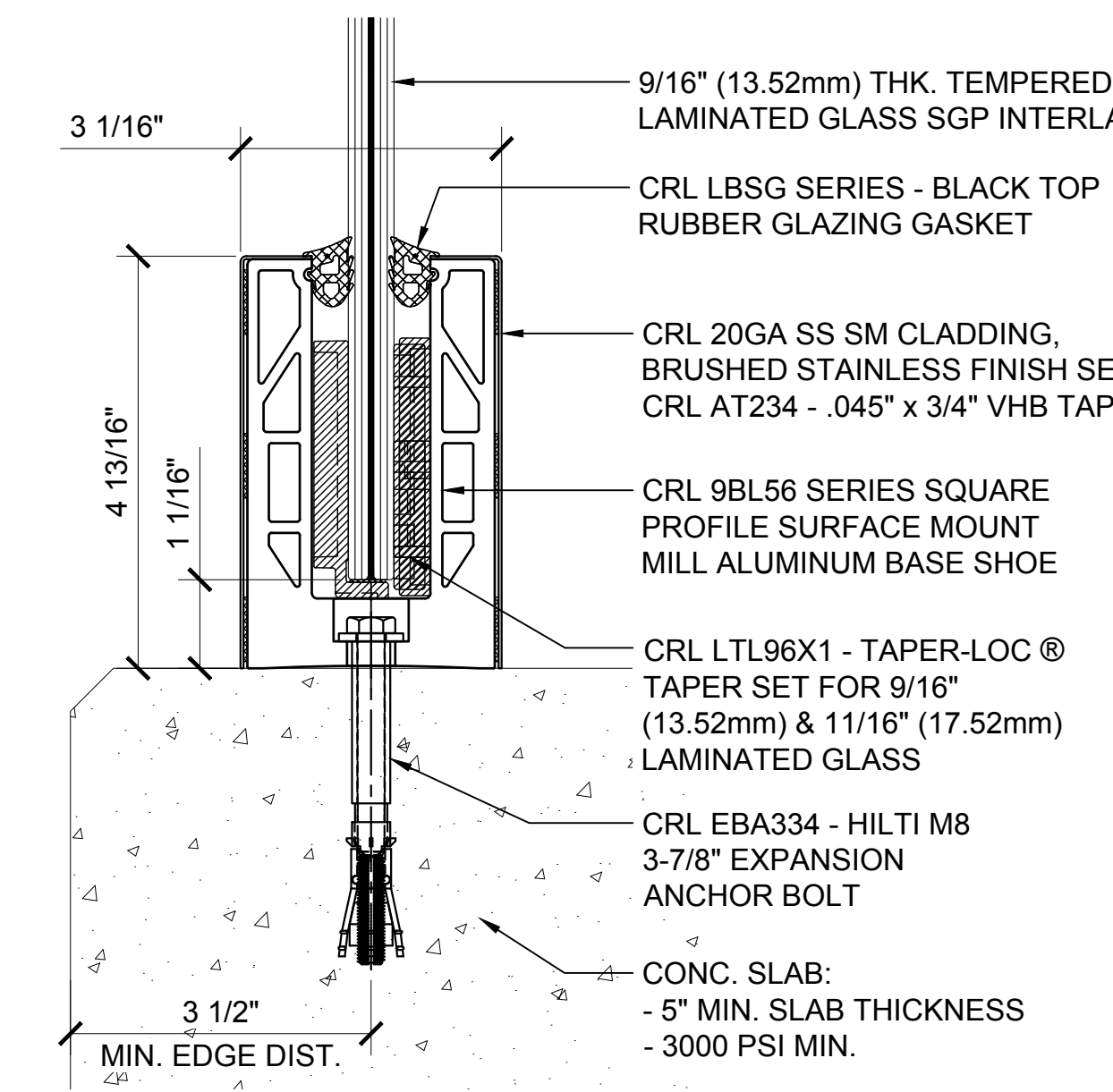


TYPICAL GRS LAMINATED GLASS RAILING ELEVATION VIEW - SURFACE MOUNT



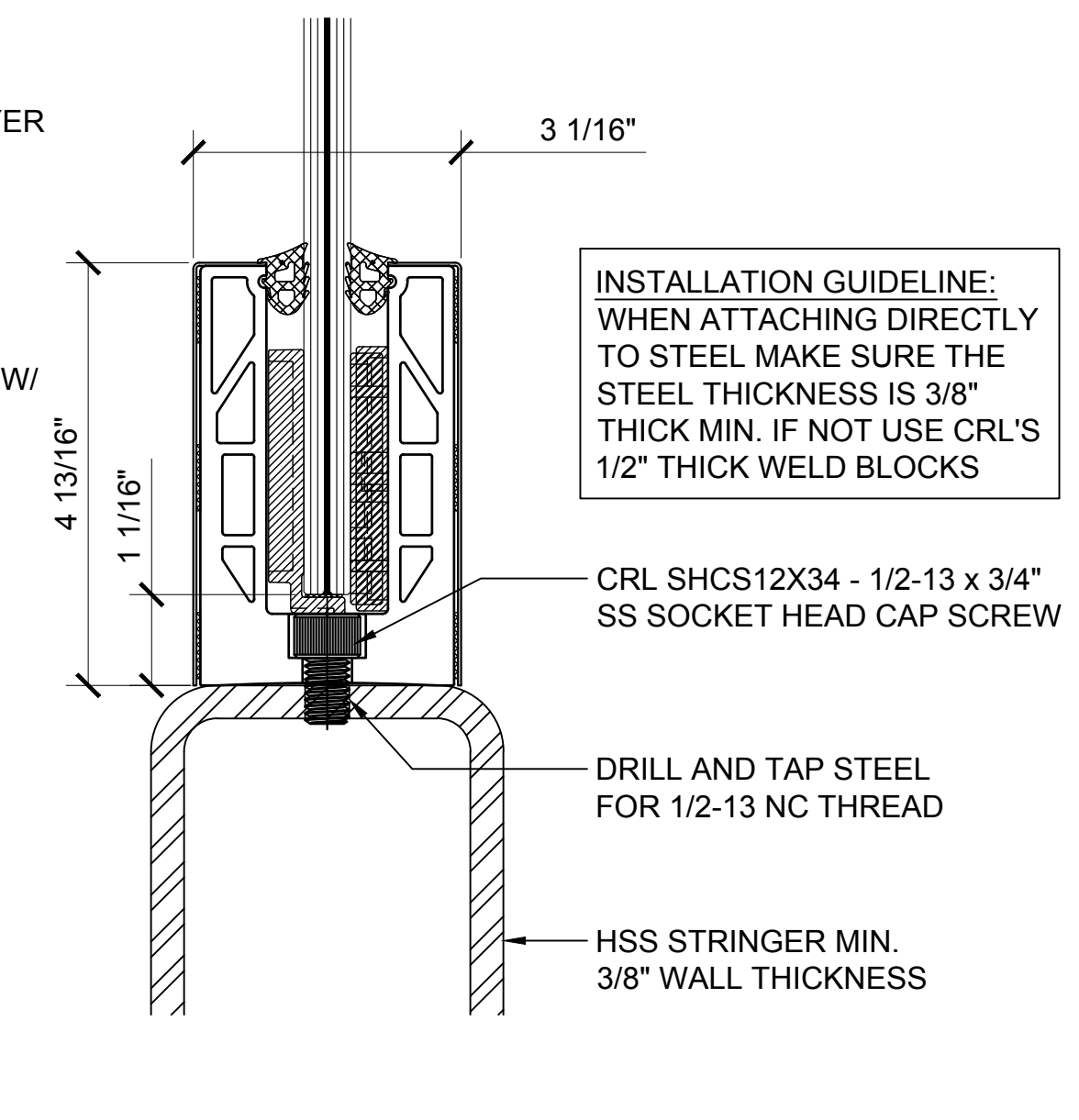
TYPICAL GRS LAMINATED GLASS RAILING ELEVATION VIEW - FASCIA MOUNT

TYPICAL BASE SHOE ATTACHMENTS USING THE 9BL56 SERIES BASE SHOE WITH TAPER-LOC® SYSTEM



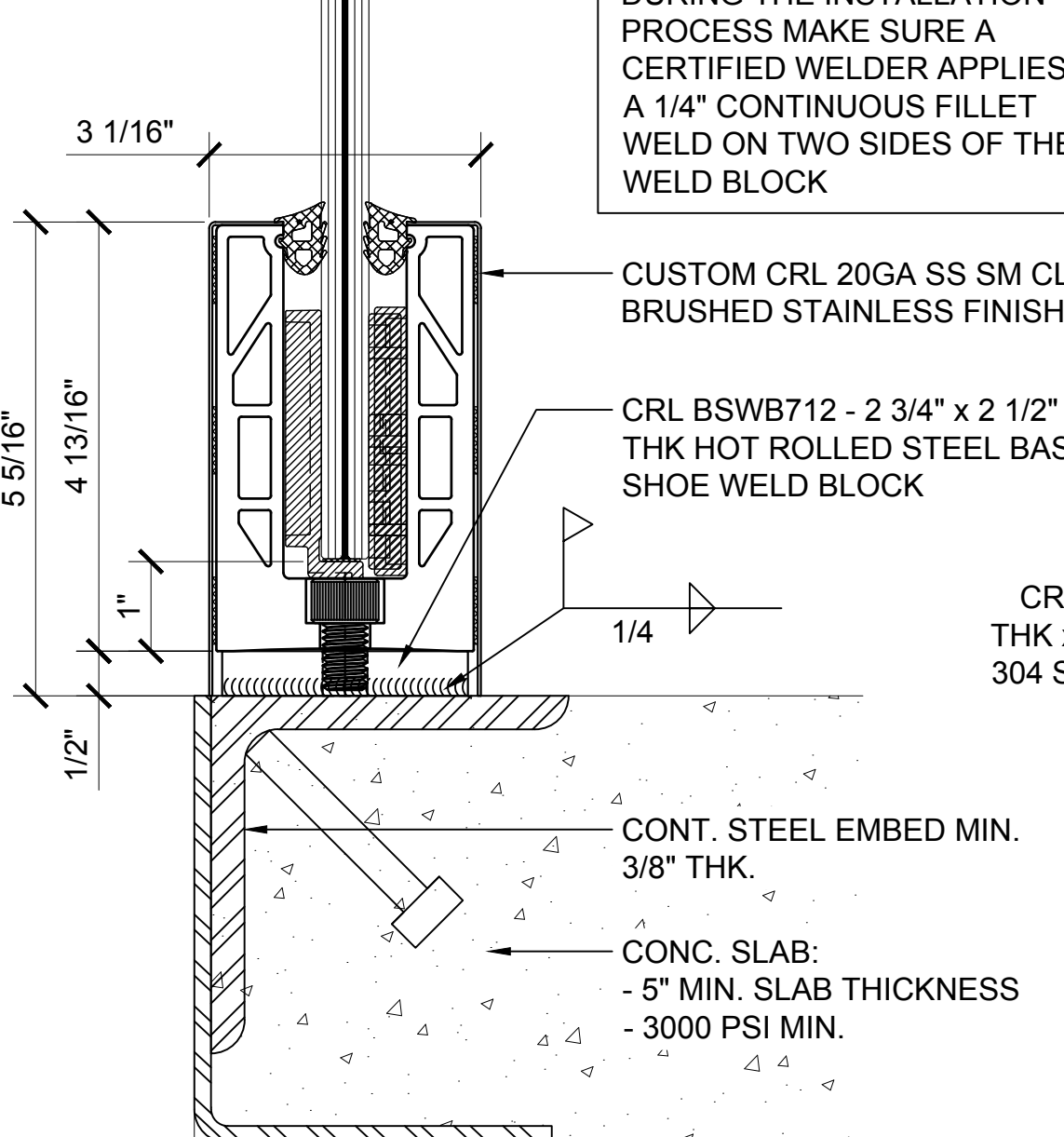
SURFACE MOUNT DETAIL CONCRETE SUBSTRATE

ANCHOR SPACING WILL DEPEND ON MOUNTING SUBSTRATE AND REGION OF PROJECT
12" O.C. SPACING IS STANDARD



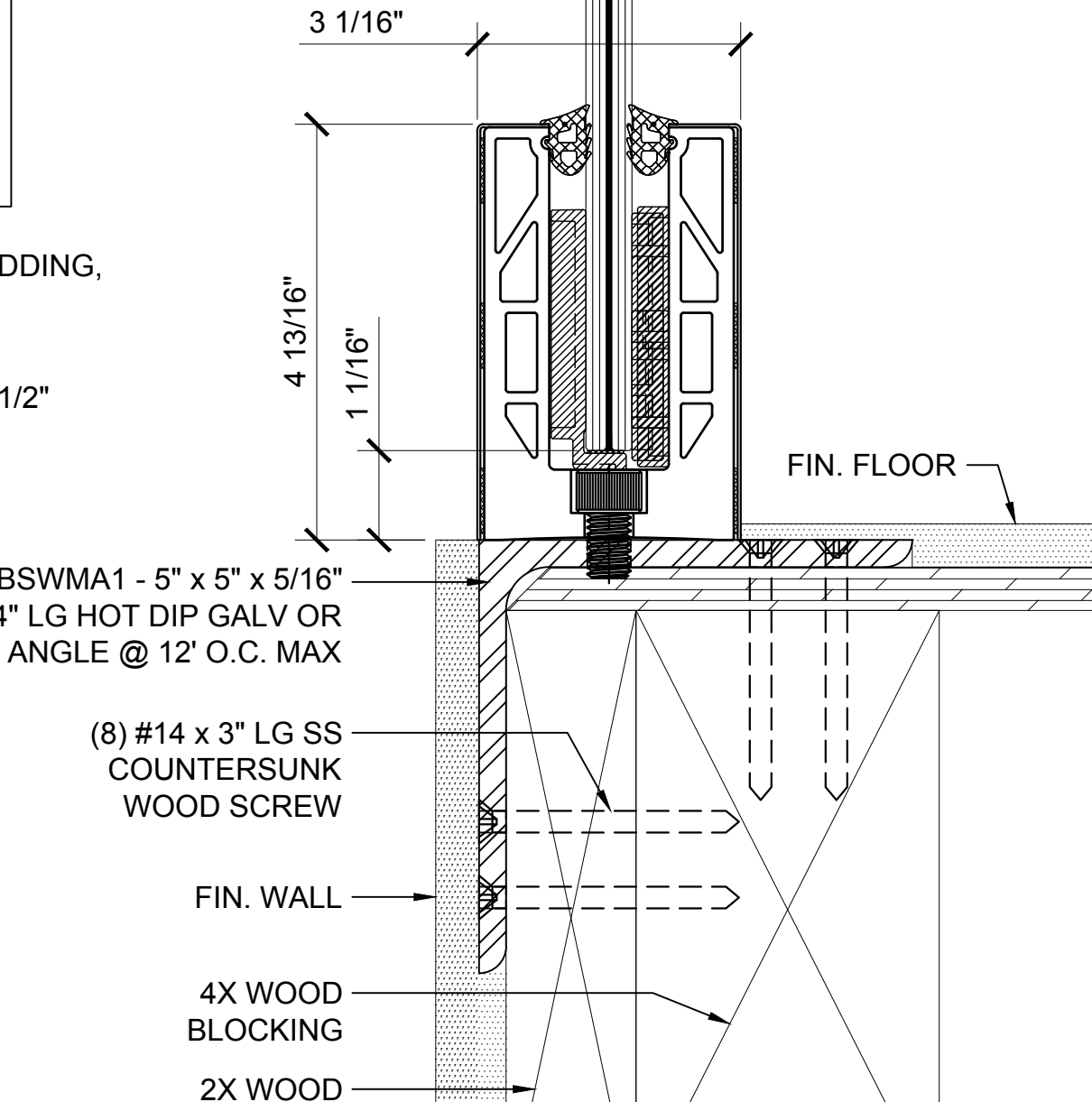
SURFACE MOUNT DETAIL STEEL SUBSTRATE

12" ON CENTER ANCHOR SPACING



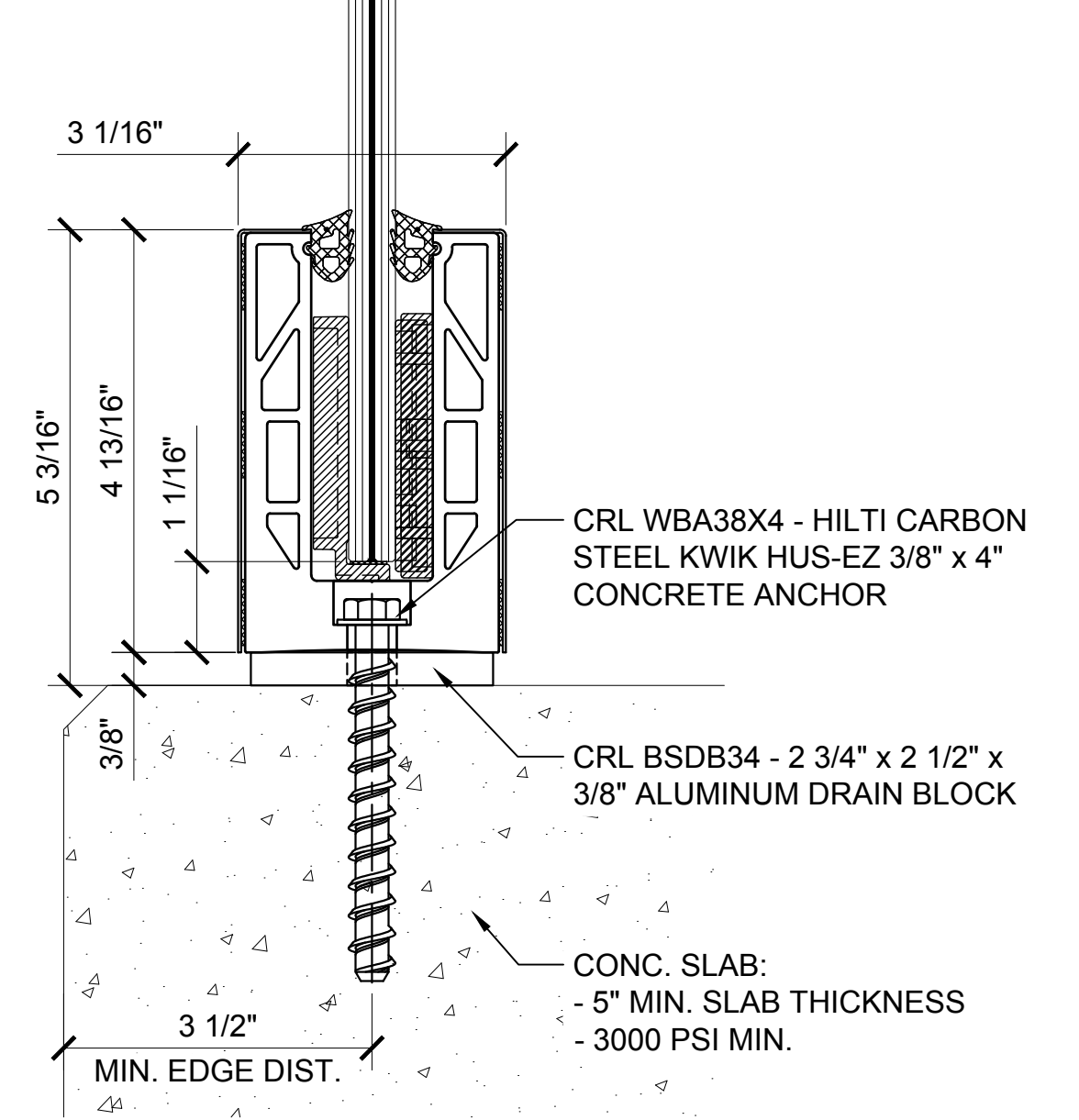
SURFACE MOUNT DETAIL STEEL SUBSTRATE W/ WELD BLOCK

12" ON CENTER ANCHOR SPACING



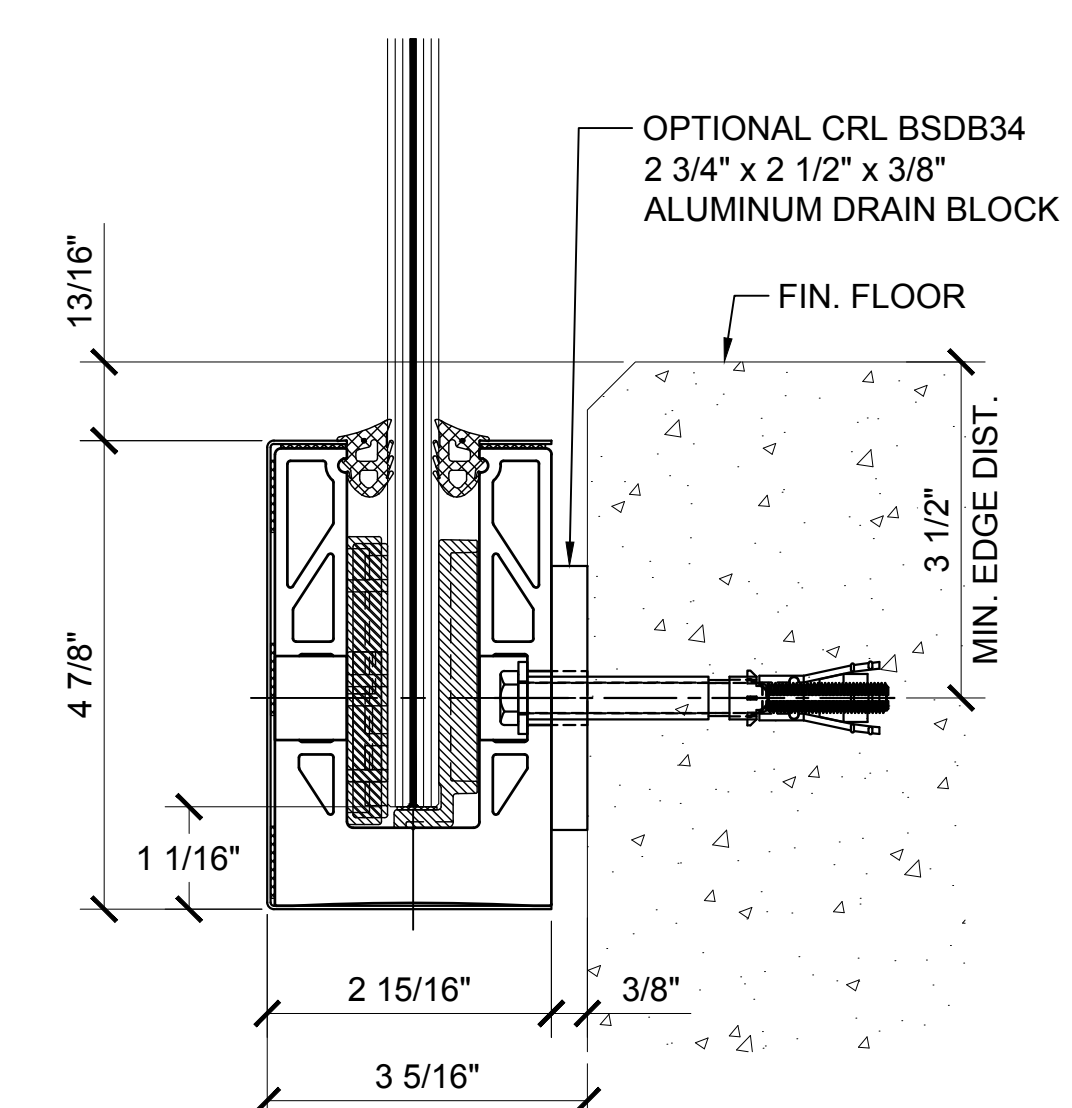
SURFACE MOUNT DETAIL WOOD SUBSTRATE

12" ON CENTER ANCHOR SPACING



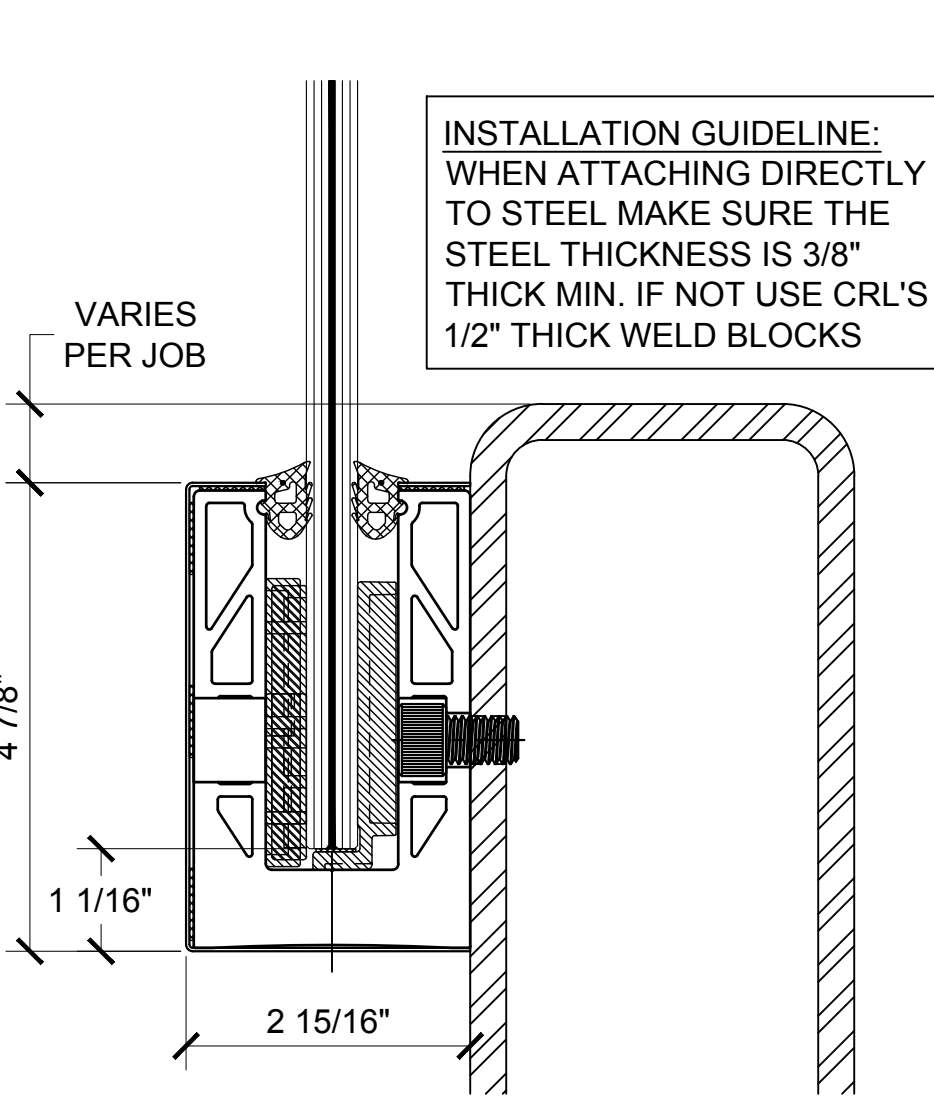
SURFACE MOUNT DETAIL CONCRETE SUBSTRATE W/ DRAIN BLOCK

ANCHOR SPACING WILL DEPEND ON MOUNTING SUBSTRATE AND REGION OF PROJECT
12" O.C. SPACING IS STANDARD



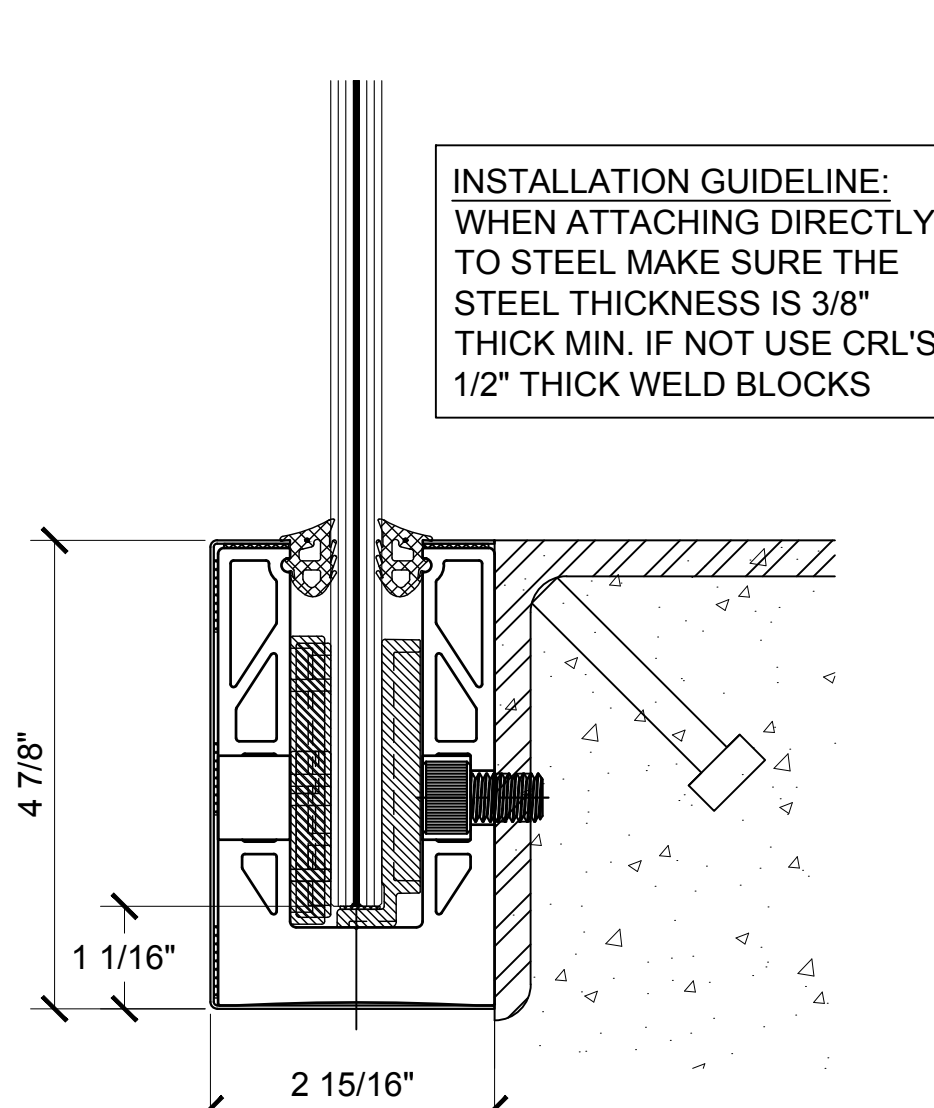
FASCIA MOUNT DETAIL CONCRETE SUBSTRATE

ANCHOR SPACING WILL DEPEND ON MOUNTING SUBSTRATE AND REGION OF PROJECT
12" O.C. SPACING IS STANDARD



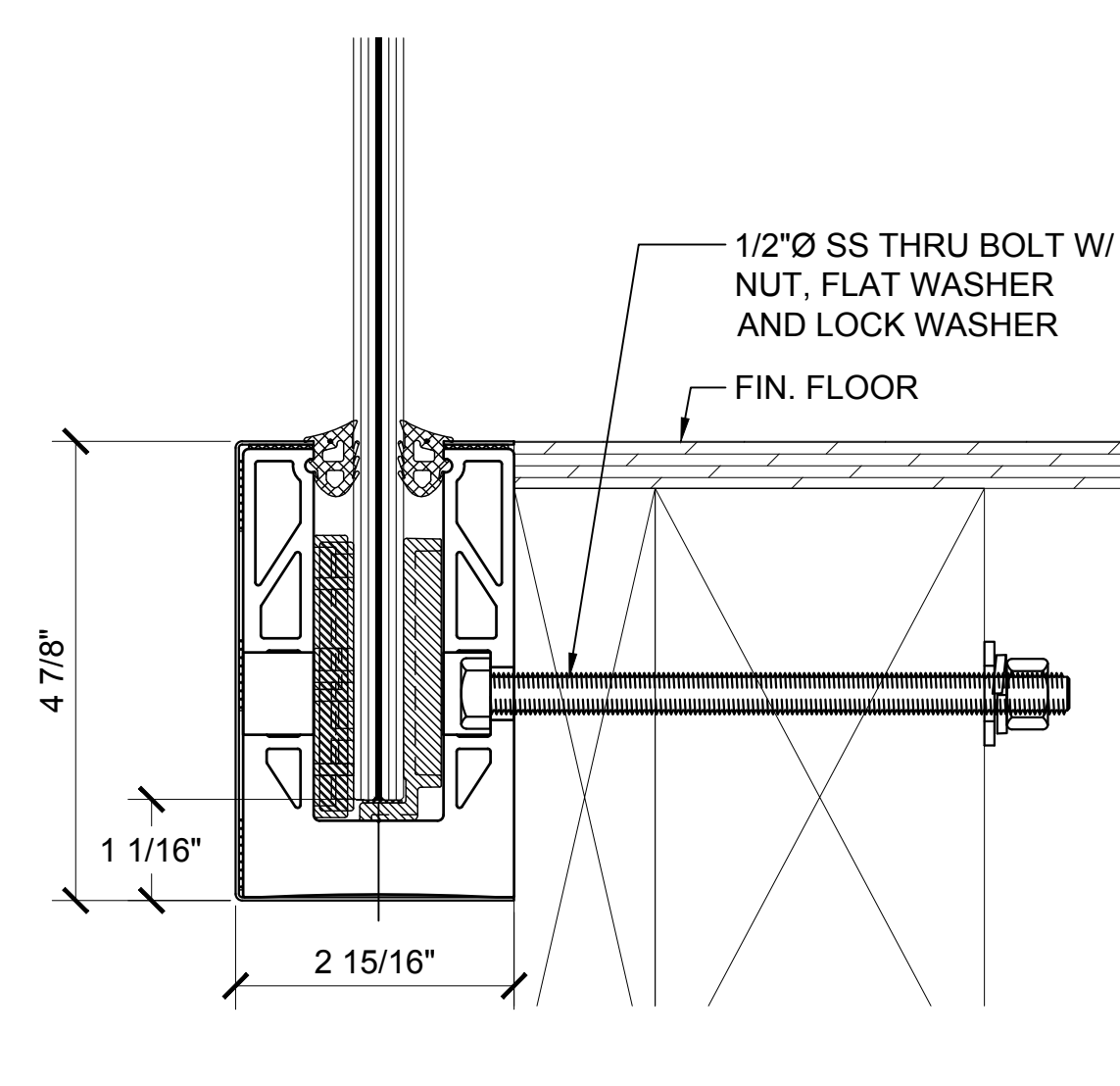
FASCIA MOUNT DETAIL STEEL SUBSTRATE

12" ON CENTER ANCHOR SPACING



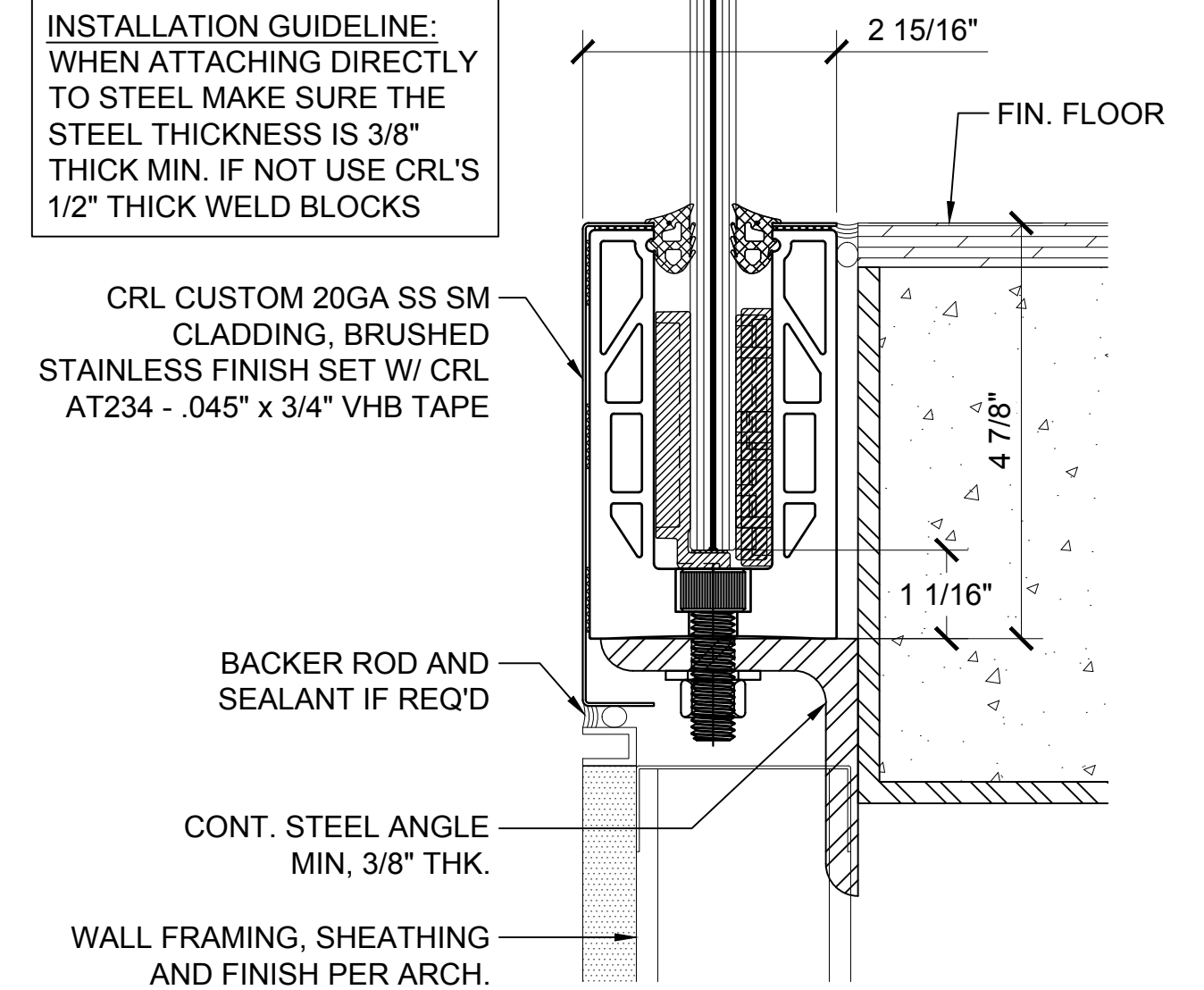
FASCIA MOUNT DETAIL STEEL SUBSTRATE

12" ON CENTER ANCHOR SPACING



FASCIA MOUNT DETAIL WOOD SUBSTRATE

ANCHOR SPACING WILL DEPEND ON MOUNTING SUBSTRATE AND REGION OF PROJECT
12" O.C. SPACING IS STANDARD



SURFACE MOUNT DETAIL STEEL SUBSTRATE W/ CUSTOM CLADDING

12" ON CENTER ANCHOR SPACING

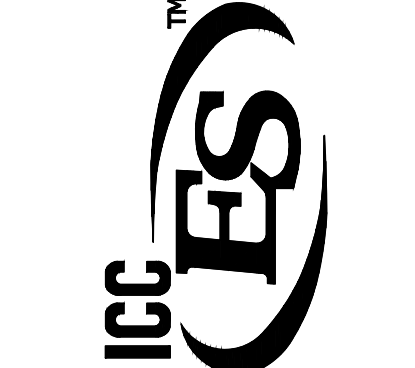
INSTALLATION GUIDELINE:
DURING THE INSTALLATION PROCESS MAKE SURE A CERTIFIED WELDER APPLIES A 1/4" CONTINUOUS FILLET WELD ON TWO SIDES OF THE WELD BLOCK

INSTALLATION GUIDELINE:
WHEN ATTACHING DIRECTLY TO STEEL MAKE SURE THE STEEL THICKNESS IS 3/8" THICK MIN. IF NOT USE CRL'S 1/2" THICK WELD BLOCKS

INSTALLATION GUIDELINE:
WHEN ATTACHING DIRECTLY TO STEEL MAKE SURE THE STEEL THICKNESS IS 3/8" THICK MIN. IF NOT USE CRL'S 1/2" THICK WELD BLOCKS

INSTALLATION GUIDELINE:
WHEN ATTACHING DIRECTLY TO STEEL MAKE SURE THE STEEL THICKNESS IS 3/8" THICK MIN. IF NOT USE CRL'S 1/2" THICK WELD BLOCKS

INSTALLATION GUIDELINE:
WHEN ATTACHING DIRECTLY TO STEEL MAKE SURE THE STEEL THICKNESS IS 3/8" THICK MIN. IF NOT USE CRL'S 1/2" THICK WELD BLOCKS



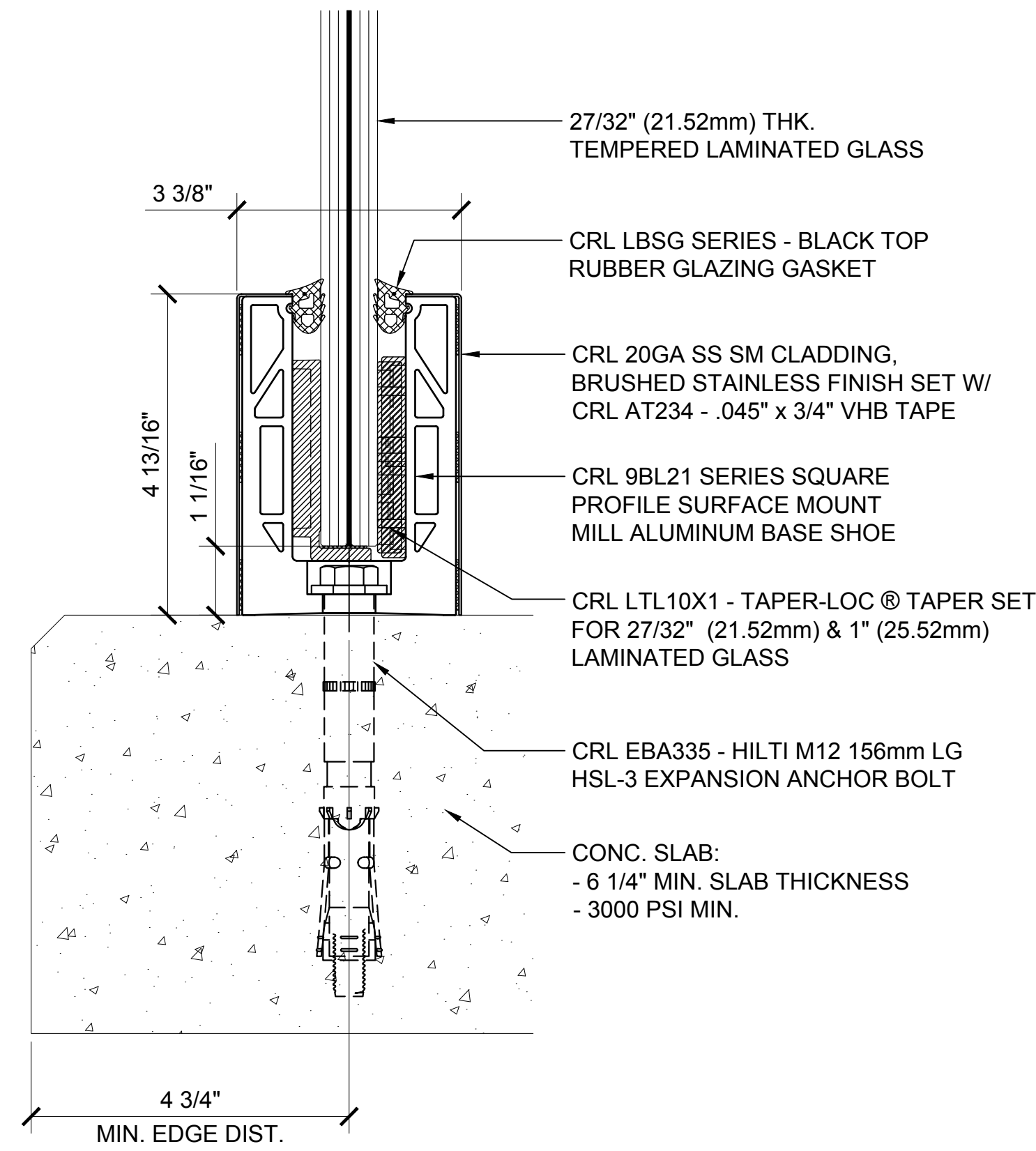
GRS
GLASS RAILING SYSTEM
FOR TEMPERED LAMINATED
9/16" (13.52mm), 1 1/16" (17.52mm),
27/32" (21.52mm) & 1 1/16" (25.52mm)
THK. GLASS

ELEVATIONS AND DETAILS
SURFACE MOUNT AND
FASCIA MOUNT OPTIONS

Drawn By: JG
Date: 02/08/2016
Scale: AS NOTED
File Name:
CRL_GRS Laminated Glass Railing System.dwg

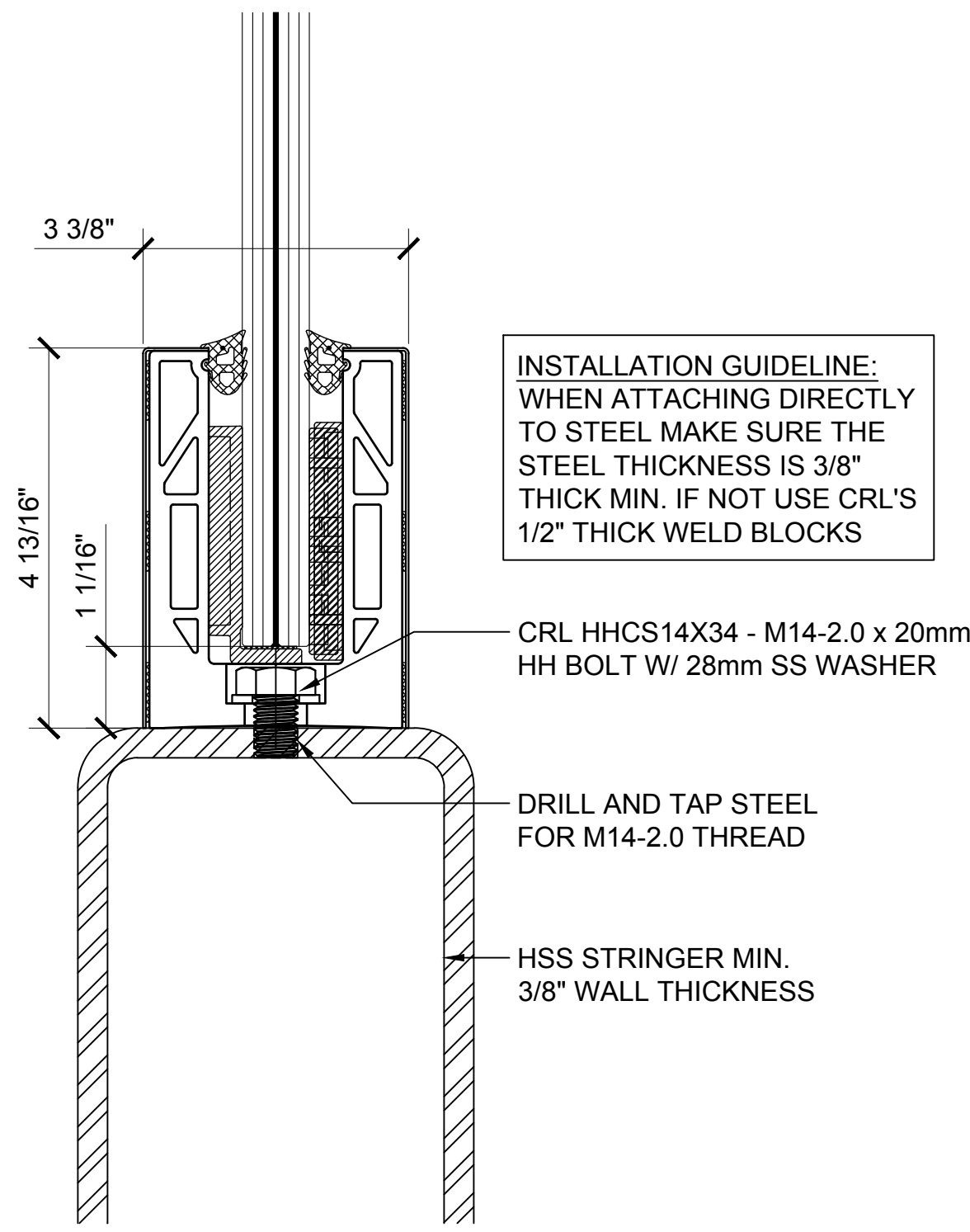
Sheet

TYPICAL BASE SHOE ATTACHMENTS USING THE 9BL21 SERIES BASE SHOE WITH TAPER-LOC® SYSTEM



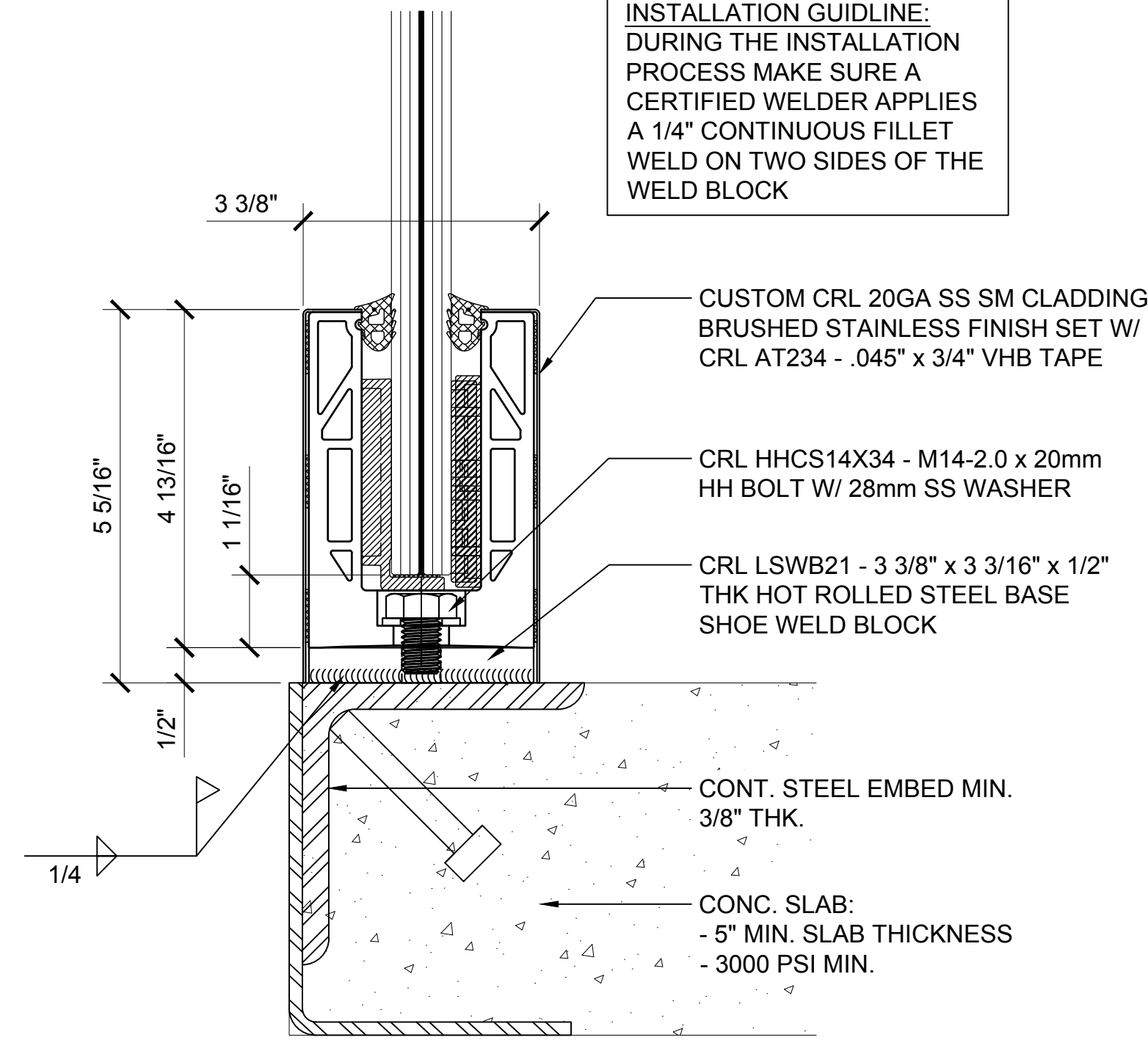
**SURFACE MOUNT DETAIL
CONCRETE SUBSTRATE**

ANCHOR SPACING WILL DEPEND ON MOUNTING
SUBSTRATE AND REGION OF PROJECT
11 13/16\"/>



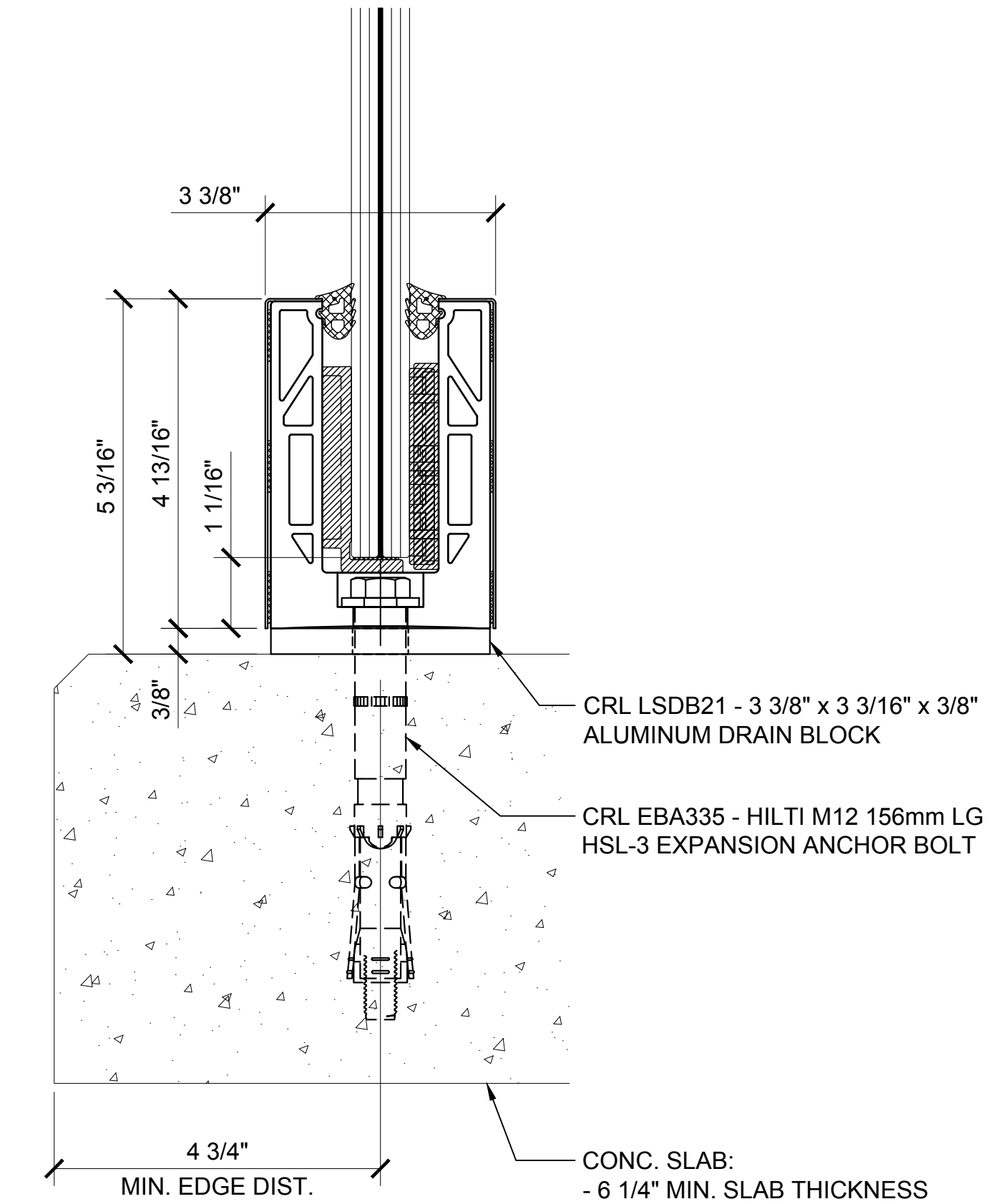
**SURFACE MOUNT DETAIL
STEEL SUBSTRATE**

11 13/16\"/>



**SURFACE MOUNT DETAIL
STEEL SUBSTRATE W/ WELD BLOCK**

11 13/16\"/>



**SURFACE MOUNT DETAIL
CONCRETE SUBSTRATE W/ DRAIN BLOCK**

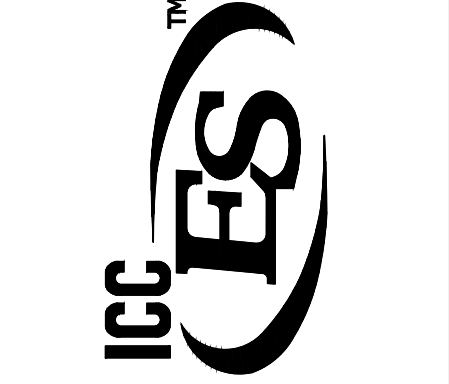
ANCHOR SPACING WILL DEPEND ON MOUNTING
SUBSTRATE AND REGION OF PROJECT
11 13/16\"/>

INSTALLATION GUIDLINE:
DURING THE INSTALLATION
PROCESS MAKE SURE A
CERTIFIED WELDER APPLIES
A 1/4\"/>

INSTALLATION GUIDLINE:
WHEN ATTACHING DIRECTLY
TO STEEL MAKE SURE THE
STEEL THICKNESS IS 3/8\"/>

Revisions By:			
5	-	-	-
4	-	-	-
3	-	-	-
2	-	-	-
1	-	-	-

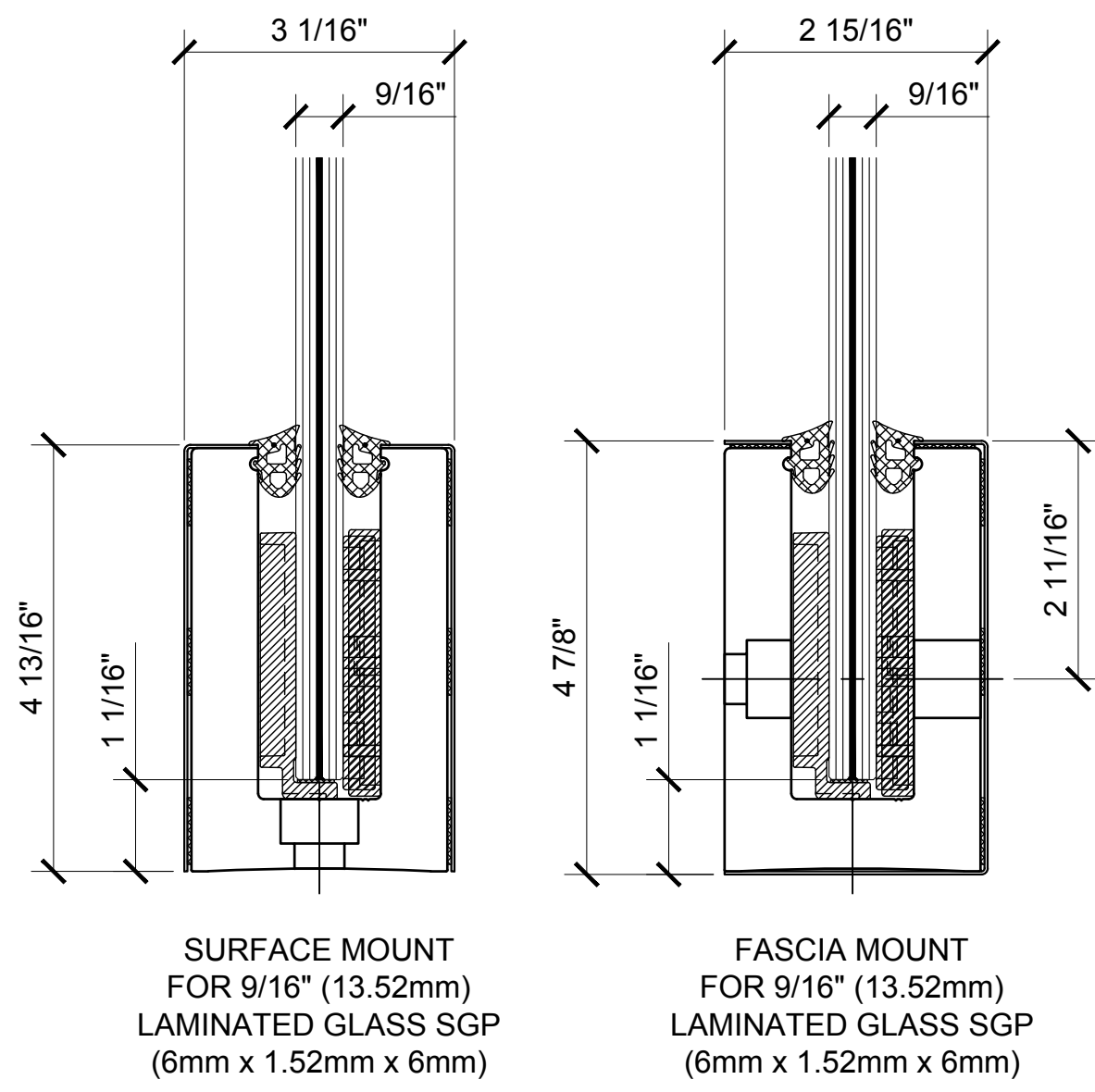
CRL
ALUMINUM
ARCHITECTURAL PRODUCTS
C.R. LAURENCE CO. ARCHITECTURAL PRODUCTS
2503 E. Vernon Avenue, Los Angeles, CA 90058-1897
PH: (800)-421-6144 FX: 800-587-7301 www.crlaurence.com



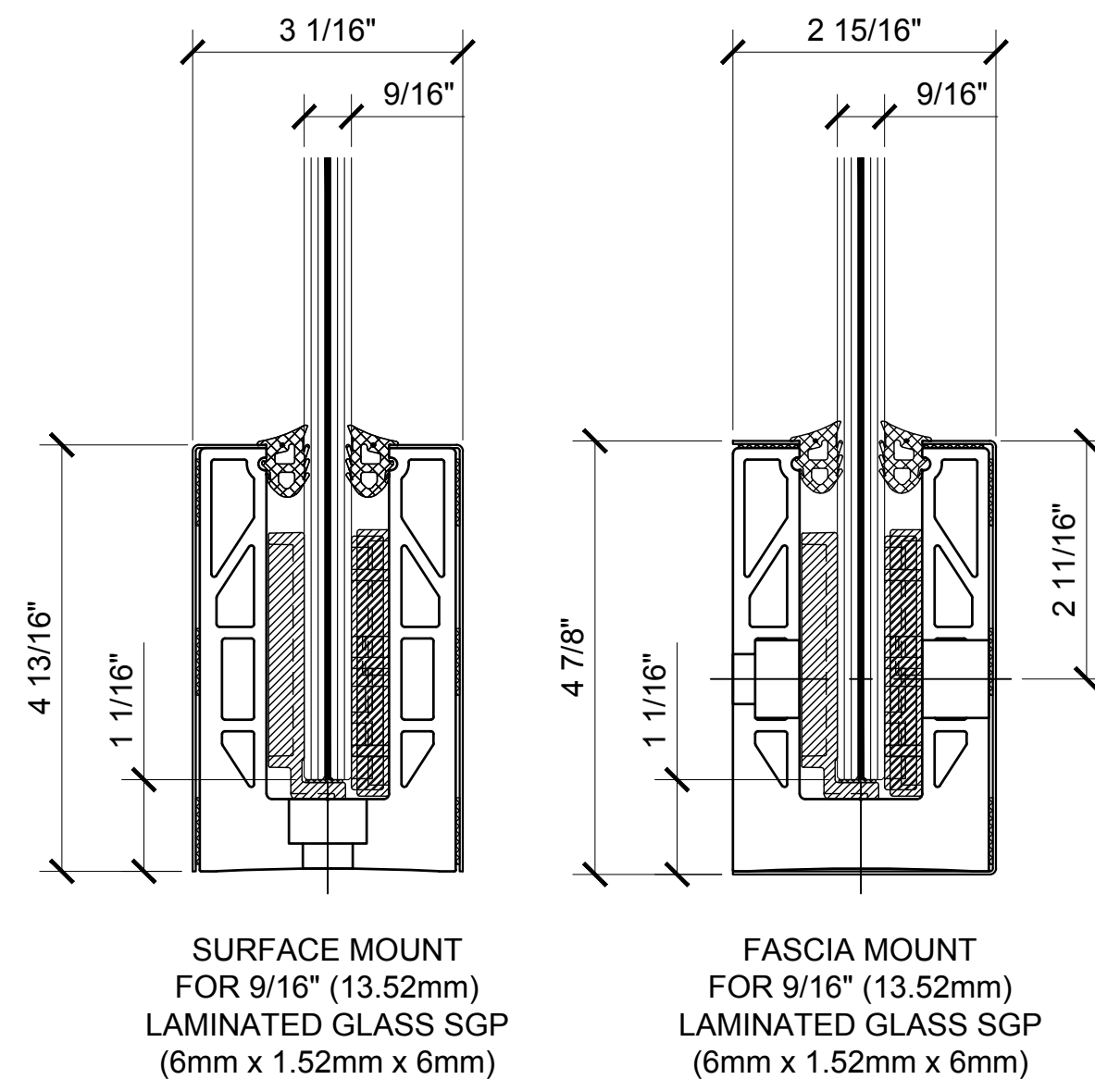
GRS
GLASS RAILING SYSTEM
FOR TEMPERED LAMINATED
9/16\"/>

DETAILS
SURFACE MOUNT OPTIONS

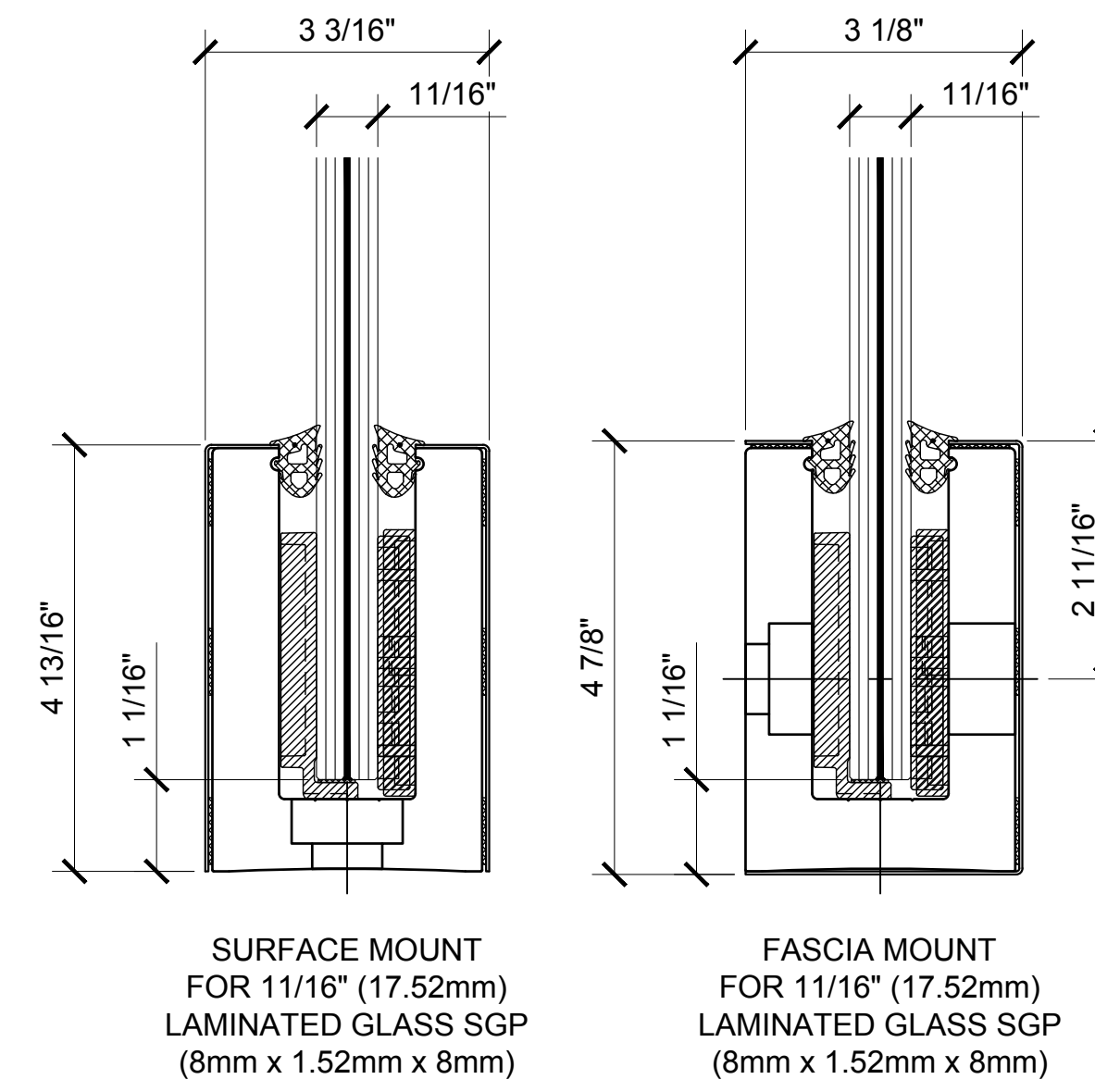
Drawn By: JG
Date: 02/08/2016
Scale: AS NOTED
File Name:
CRL_GRS Laminated Glass Railing System.dwg



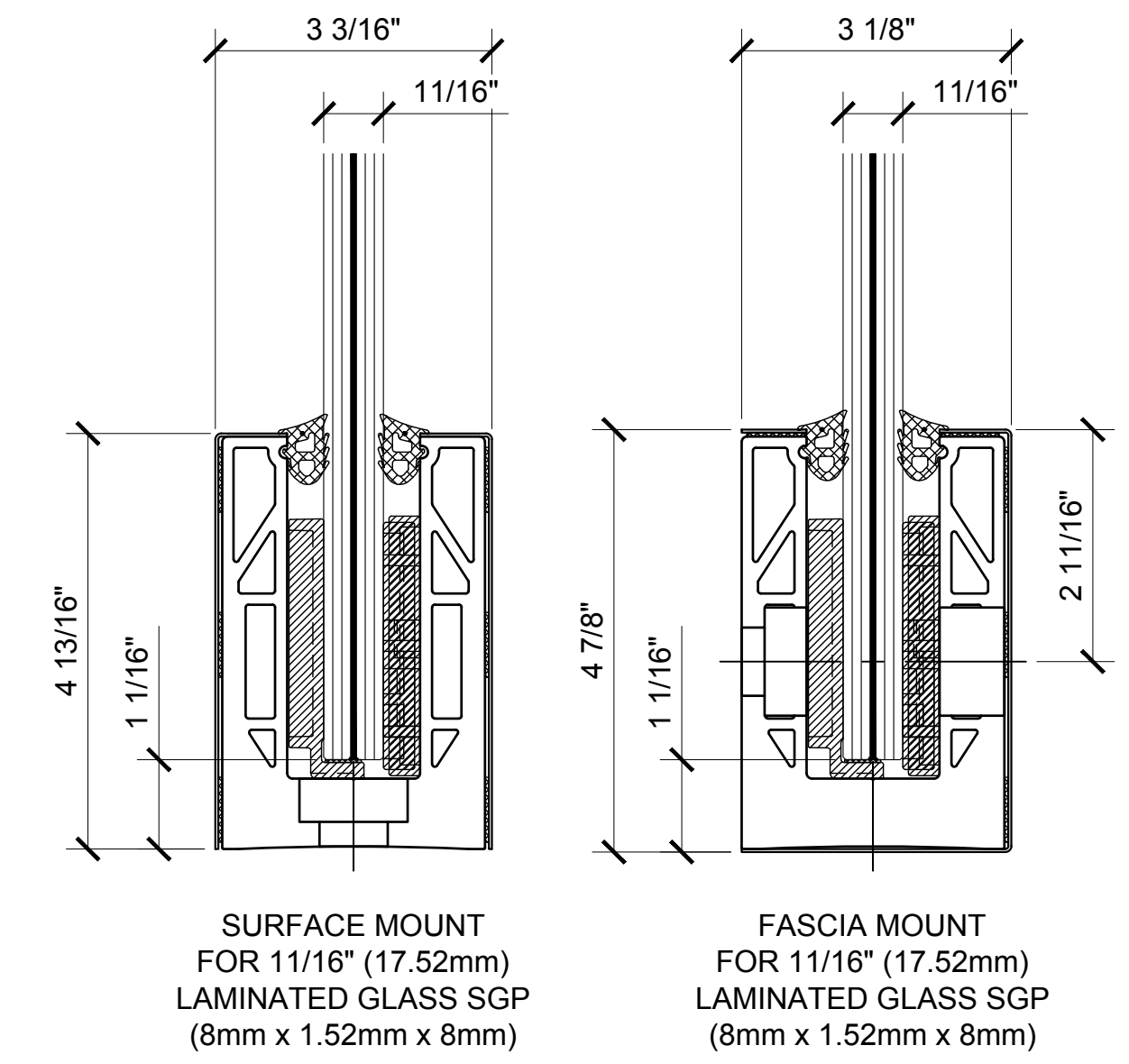
L56S SERIES BASE SHOE
LTL96X1 TAPERLOC



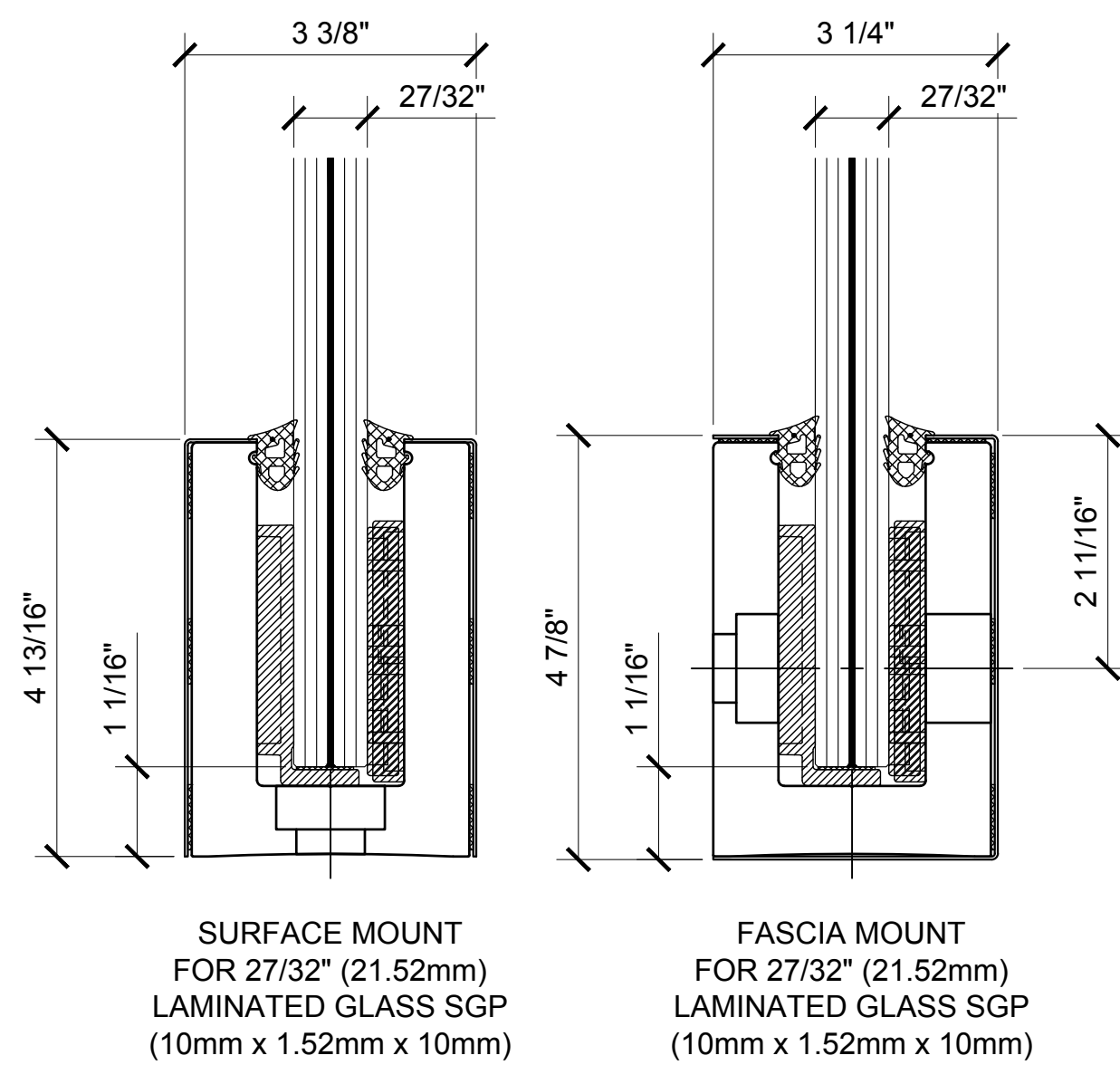
9BL56 SERIES BASE SHOE
LTL96X1 TAPERLOC



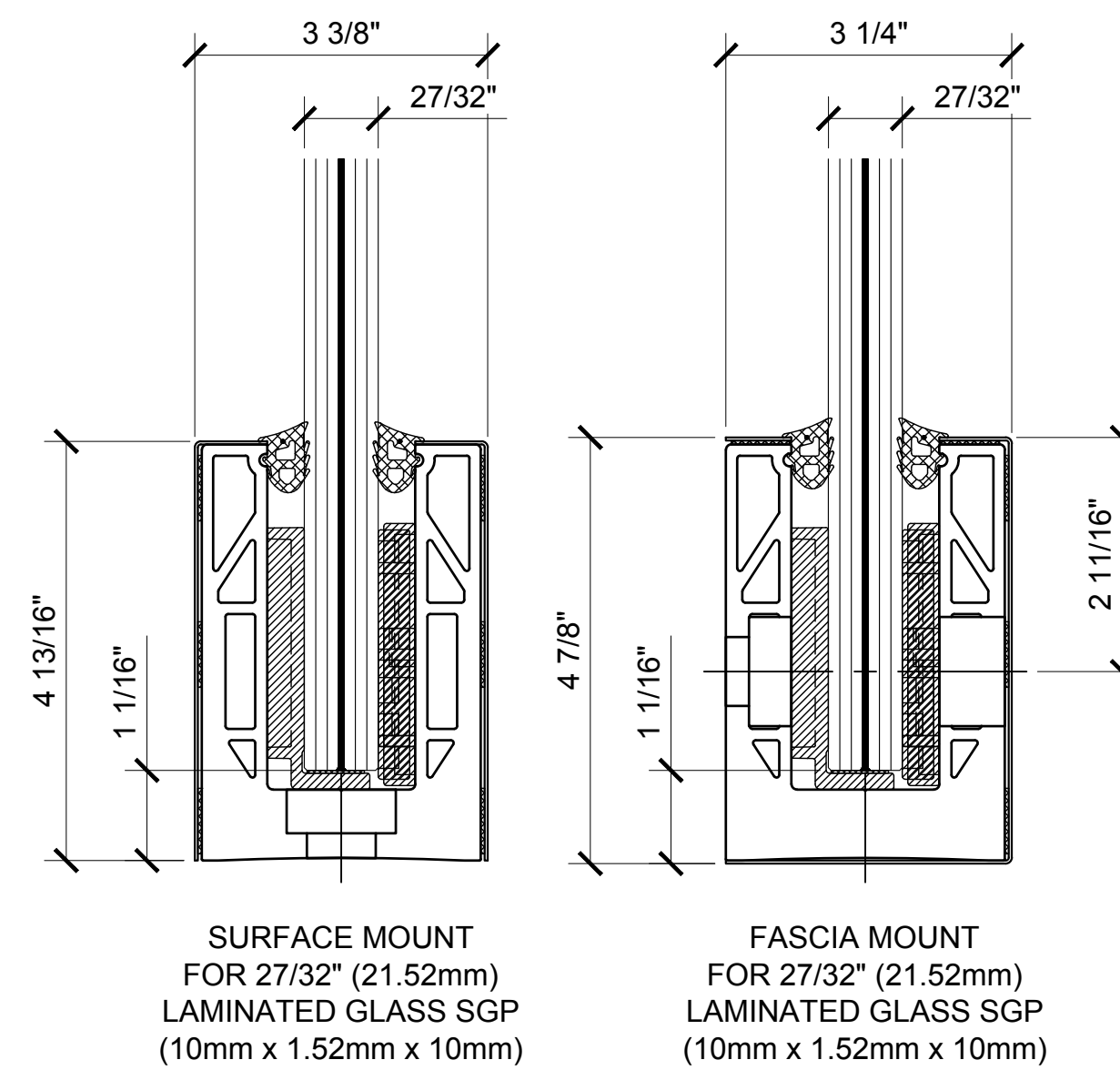
L68S SERIES BASE SHOE
LTL96X1 TAPERLOC



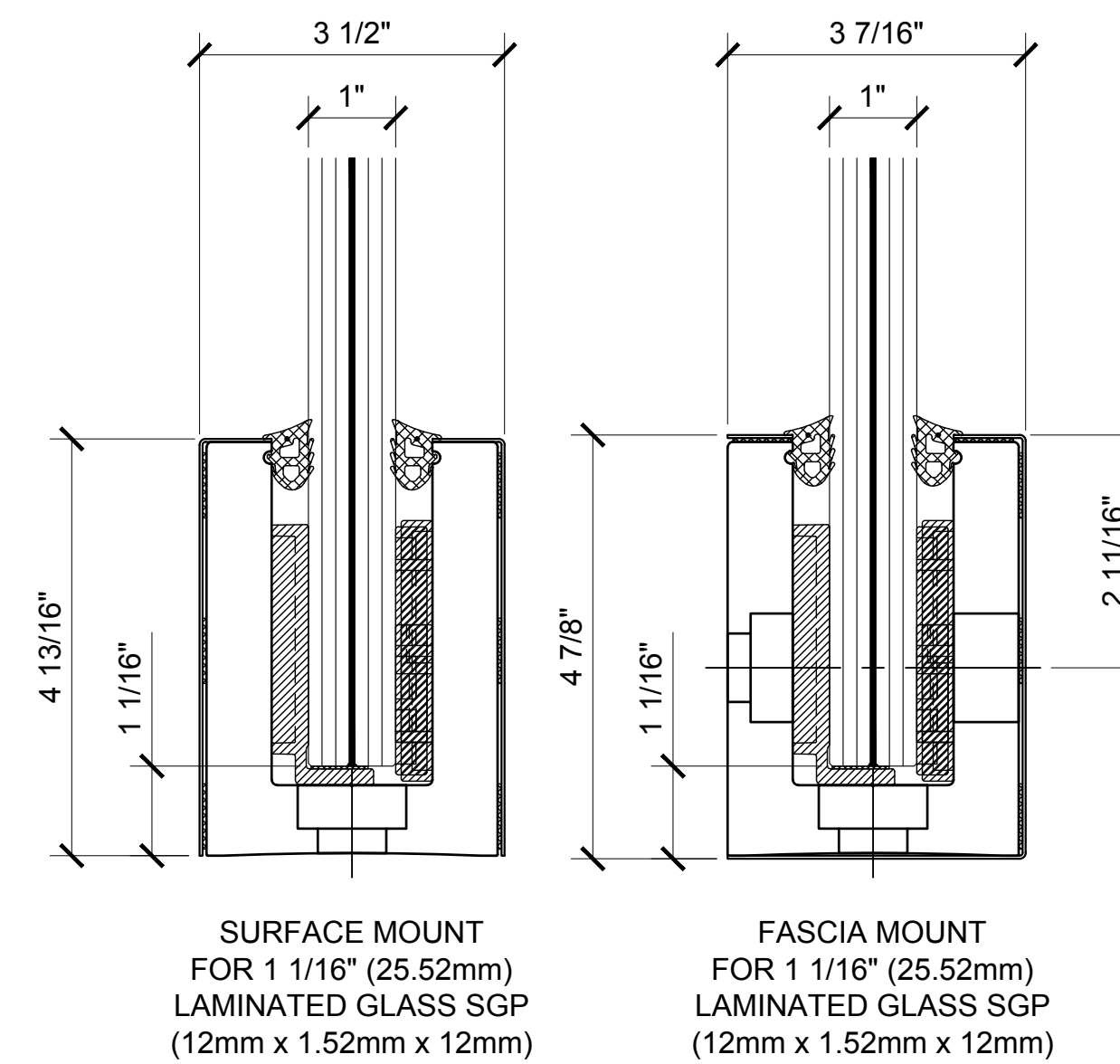
9BL68 SERIES BASE SHOE
LTL96X1 TAPERLOC



L21S SERIES BASE SHOE
LTL10X1 TAPERLOC



9BL21 SERIES BASE SHOE
LTL10X1 TAPERLOC

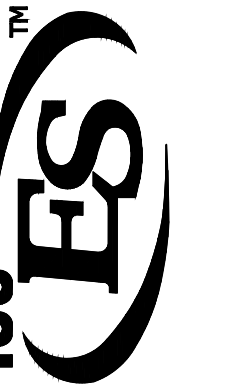


L25S SERIES BASE SHOE
LTL10X1 TAPERLOC

Revisions By:

5	-	-
4	-	-
3	-	-
2	-	-
1	-	-

CRL
ALUMINUM
C.R. LAURENCE CO. ARCHITECTURAL PRODUCTS
2503 E. Vernon Avenue, Los Angeles, CA 90058-1897
PH: (800)-421-6144 FX: (800)-587-7301 www.crlaurence.com



GRS
GLASS RAILING SYSTEM
FOR TEMPERED LAMINATED
9/16" (13.52mm), 1 1/16" (17.52mm),
27/32" (21.52mm) & 1 1/16" (25.52mm)
THK. GLASS

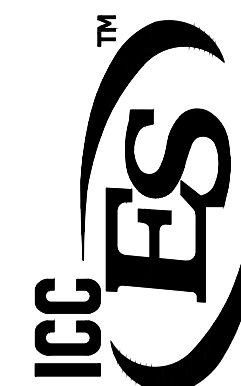
BASE SHOE OPTIONS
SURFACE & FASCIA MOUNT

Drawn By: JG
Date: 02/08/2016
Scale: AS NOTED
File Name:
CRL_GRS Laminated Glass Railing System.dwg

Sheet

Revisions By:

5	-	-
4	-	-
3	-	-
2	-	-
1	-	-

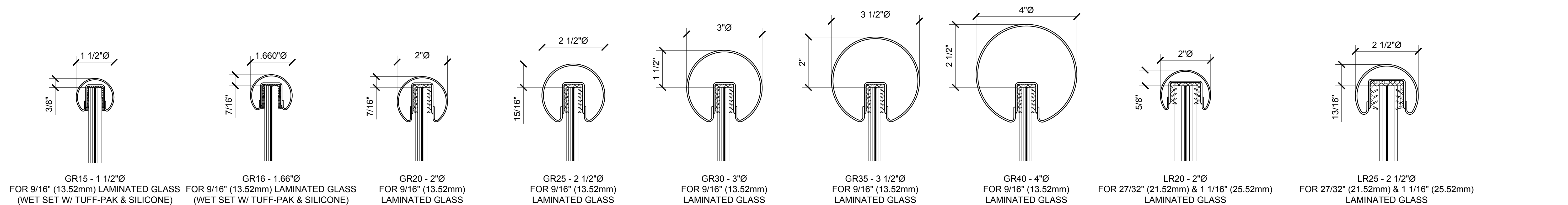


GRS
GLASS RAILING SYSTEM
FOR TEMPERED LAMINATED
9/16" (13.52mm), 1 1/16" (17.52mm),
2 1/2" (25.52mm) & 1 1/16" (17.52mm) THK. GLASS

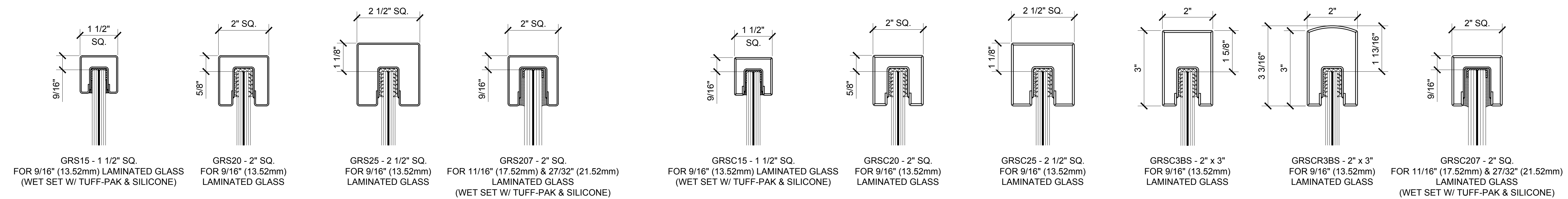
CAP RAIL OPTIONS

Drawn By: JG
Date: 02/08/2016
Scale: AS NOTED
File Name: CRL.GRS Laminated Glass Railing System.dwg

Sheet

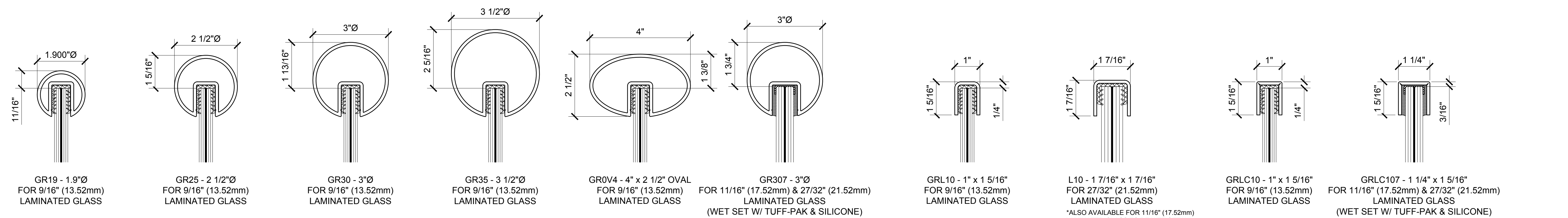


BUMP-FORMED & WELDED PREMIUM RADIUS PROFILE CAP RAIL



BUMP-FORMED & WELDED PREMIUM SQUARE PROFILE CAP RAIL

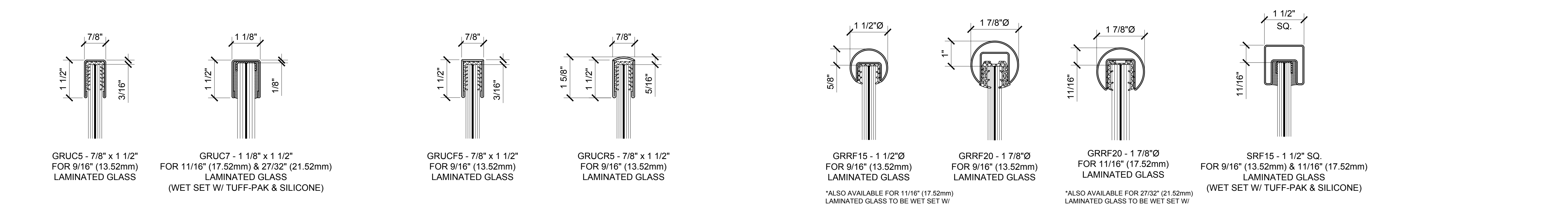
SQUARE PROFILE CRISP CORNER CAP RAIL



EXTRUDED ALUMINUM CAP RAIL

LOW PROFILE 11 GAUGE CAP RAIL

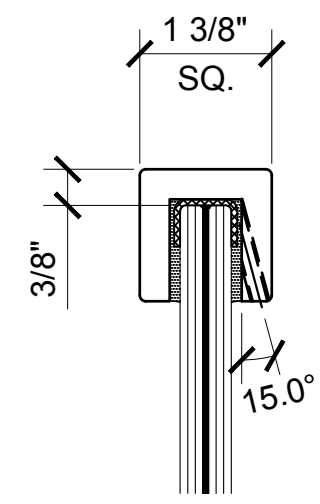
LOW PROFILE 11 GAUGE CRISP CORNER CAP RAIL



U-CHANNEL 18 GAUGE CAP RAIL

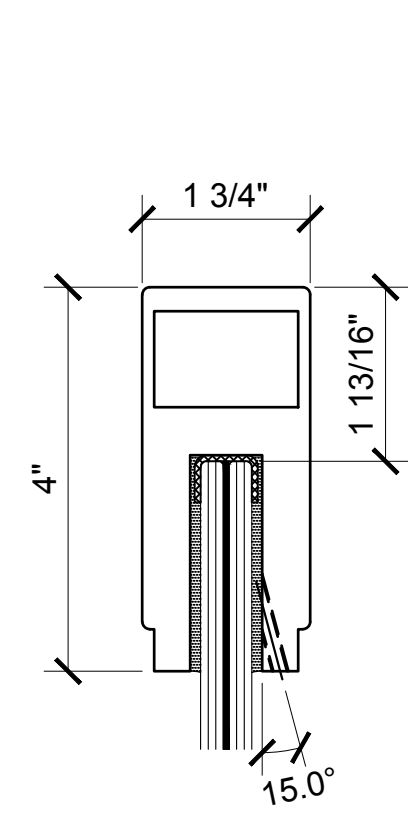
U-CHANNEL 18 GAUGE CRISP CORNER CAP RAIL

ROLL-FORMED CAP RAIL

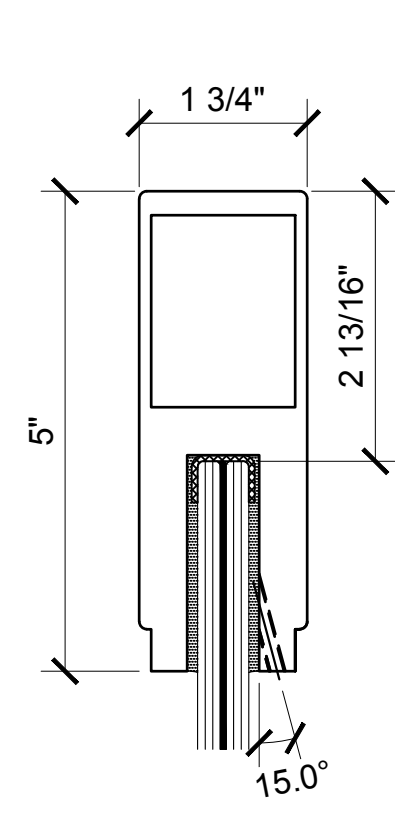


324 SERIES - 1 3/8" SQ.
FOR 9/16" (13.52mm)
LAMINATED GLASS
(WET SET W/ TUFF-PAK &
SILICONE)

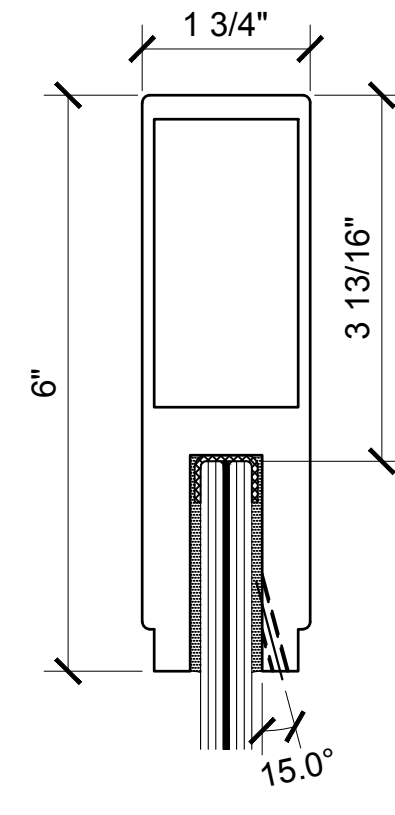
BLUMCRAFT ® EXTRUDED SOLID ALUMINUM CAP RAIL



636 SERIES - 1 3/4" x 4"
FOR 9/16" (13.52mm)
LAMINATED GLASS
(WET SET W/ TUFF-PAK &
SILICONE)

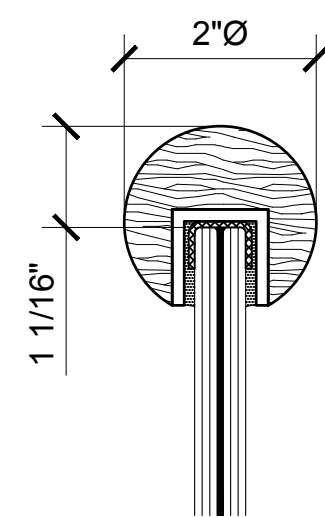


637 SERIES - 1 3/4" x 5"
FOR 9/16" (13.52mm)
LAMINATED GLASS
(WET SET W/ TUFF-PAK &
SILICONE)

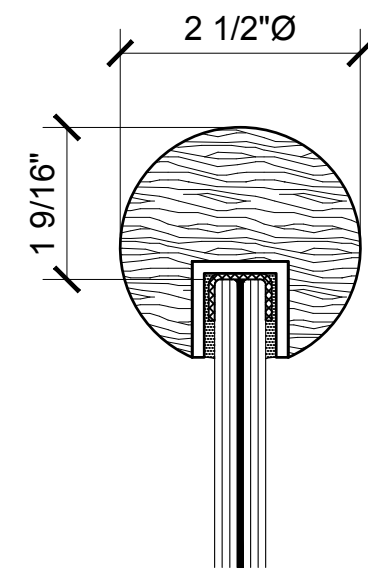


638 SERIES - 1 3/4" x 6"
FOR 9/16" (13.52mm)
LAMINATED GLASS
(WET SET W/ TUFF-PAK &
SILICONE)

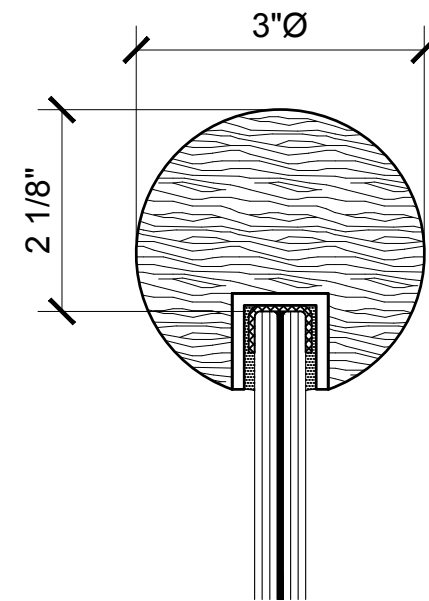
BLUMCRAFT ® EXTRUDED ALUMINUM CAP RAIL



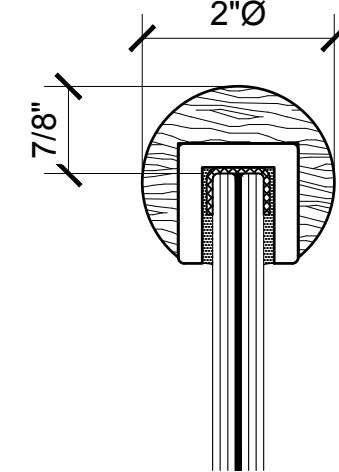
WCR20 - 2"Ø
FOR 9/16" (13.52mm)
LAMINATED GLASS
(WET SET W/
TUFF-PAK & SILICONE)



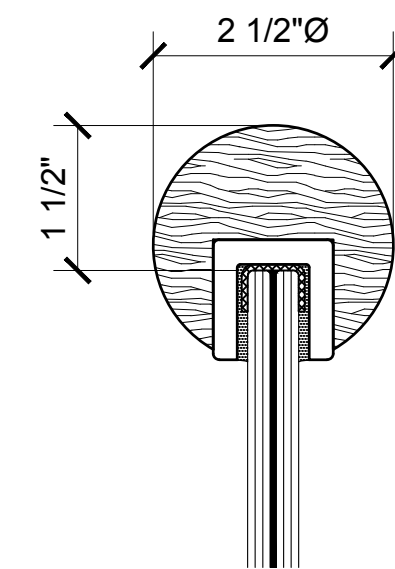
WCR25 - 2 1/2"Ø
FOR 9/16" (13.52mm)
LAMINATED GLASS
(WET SET W/
TUFF-PAK & SILICONE)



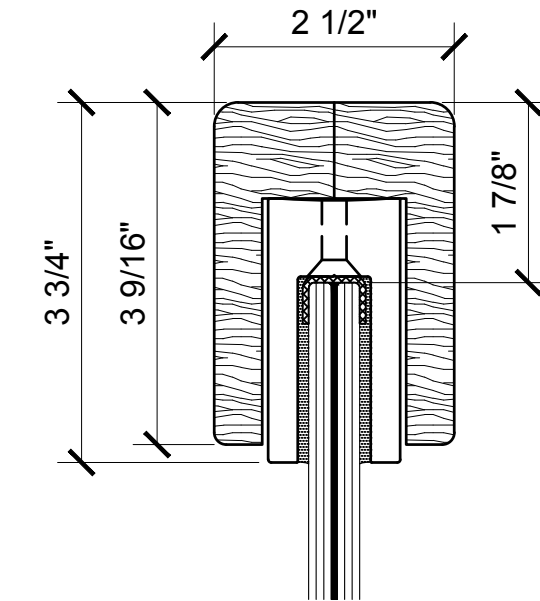
WCR30 - 3"Ø
FOR 9/16" (13.52mm)
LAMINATED GLASS
(WET SET W/
TUFF-PAK & SILICONE)



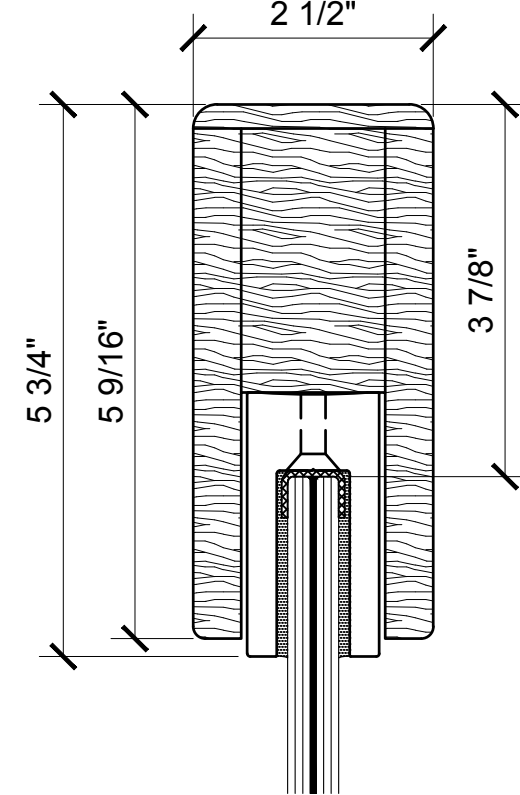
346 SERIES - 2"Ø
FOR 9/16" (13.52mm)
LAMINATED GLASS
(WET SET W/ TUFF-PAK &
SILICONE)



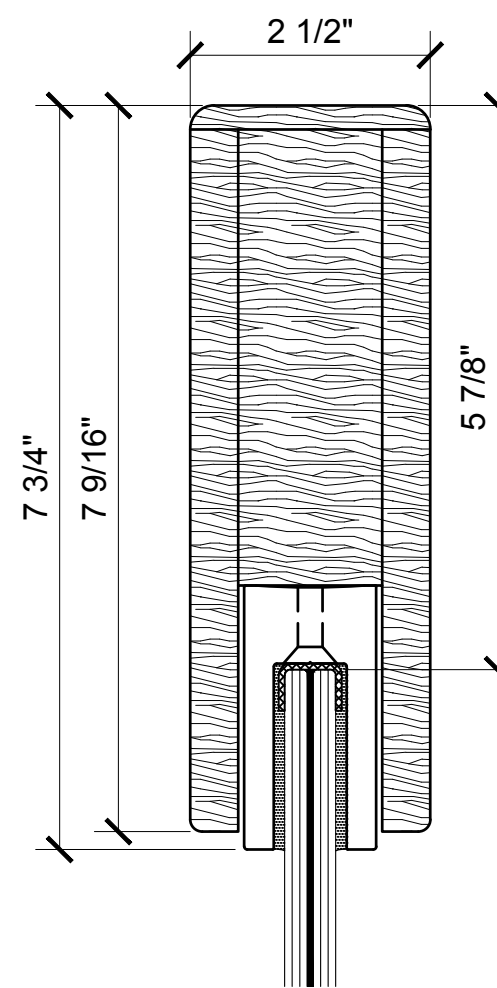
347 SERIES - 2 1/2"Ø
FOR 9/16" (13.52mm)
LAMINATED GLASS
(WET SET W/ TUFF-PAK &
SILICONE)



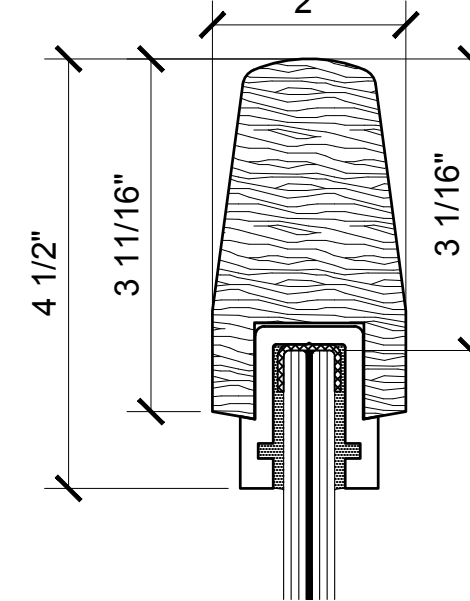
631 SERIES - 2 1/2" x 3 3/4"
FOR 9/16" (13.52mm)
LAMINATED GLASS
(WET SET W/ TUFF-PAK &
SILICONE)



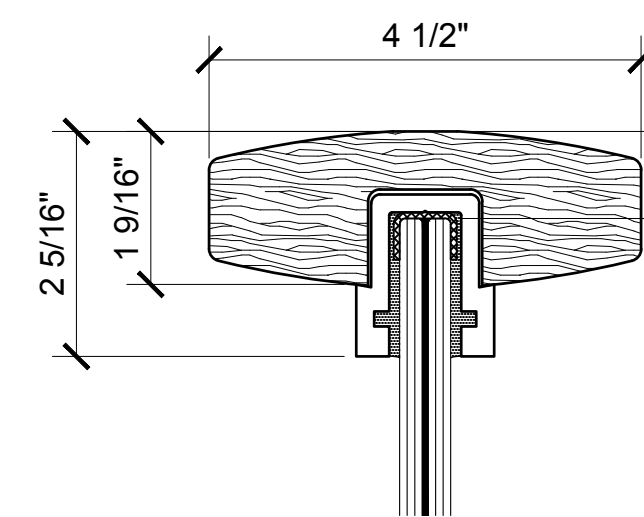
632 SERIES - 2 1/2" x 5 3/4"
FOR 9/16" (13.52mm)
LAMINATED GLASS
(WET SET W/ TUFF-PAK &
SILICONE)



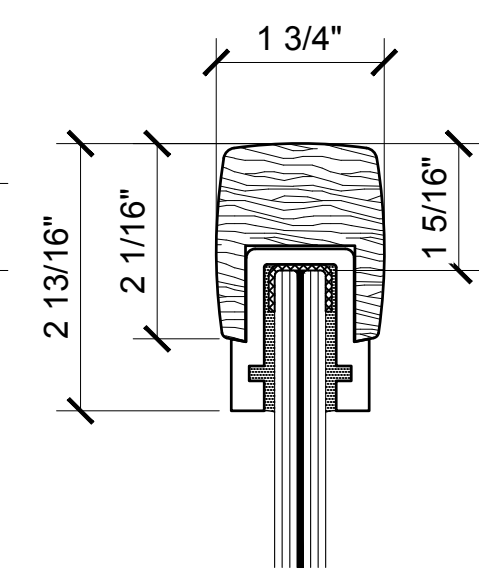
633 SERIES - 2 1/2" x 7 3/4"
FOR 9/16" (13.52mm)
LAMINATED GLASS
(WET SET W/ TUFF-PAK &
SILICONE)



372 SERIES - 2" x 4 1/2"
FOR 9/16" (13.52mm)
LAMINATED GLASS
(WET SET W/ TUFF-PAK &
SILICONE)



373 SERIES - 4 1/2" x 2 5/16"
FOR 9/16" (13.52mm)
LAMINATED GLASS
(WET SET W/ TUFF-PAK &
SILICONE)

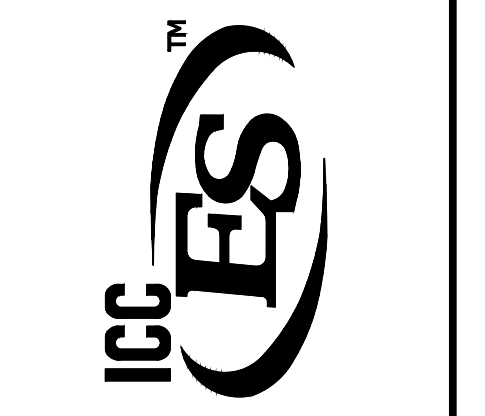


397 SERIES - 1 3/4" x 2 13/16"
FOR 9/16" (13.52mm)
LAMINATED GLASS
(WET SET W/ TUFF-PAK &
SILICONE)

WOOD CAP RAIL

Revisions By:

5	-	-
4	-	-
3	-	-
2	-	-
1	-	-



GRS
GLASS RAILING SYSTEM
FOR TEMPERED LAMINATED
9/16" (13.52mm), 1 1/16" (17.52mm),
27/32" (21.52mm) & 1 1/16" (25.52mm)
THK. GLASS

CAP RAIL OPTIONS

Drawn By: JG
Date: 02/08/2016
Scale: AS NOTED
File Name:

CRL.GRS Laminated Glass Railing System.dwg